

Little Addington - Northamptonshire

St. Mary's Farm - Five stone houses in the heart of the village



Plot 3 - Four bedroom house

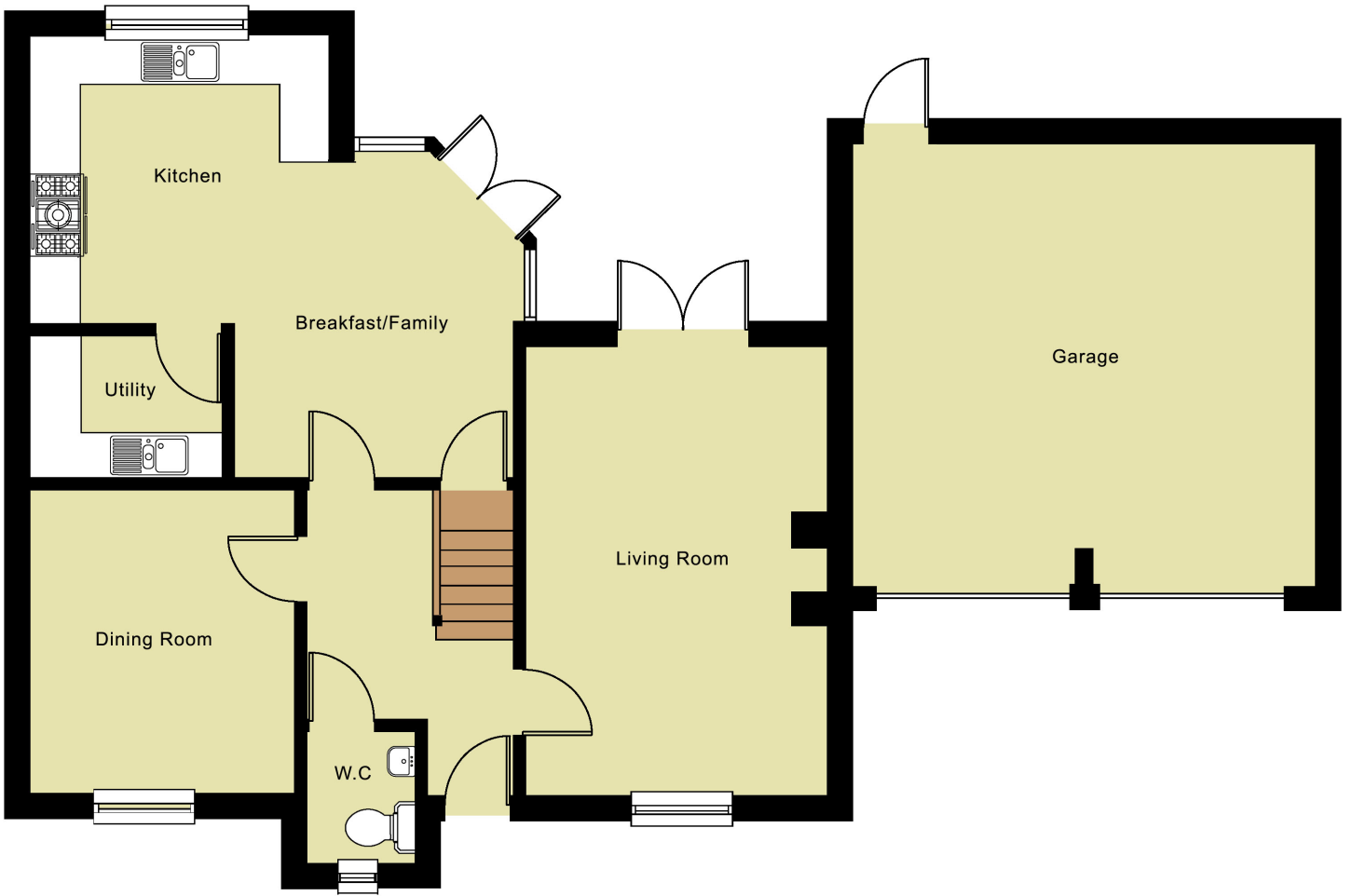
£ TBA

- Four bedrooms
- En-suite shower room to master bedroom
- Family bathroom
- Large kitchen/breakfast/family room
- Fitted kitchen with granite worktops
- Utility room
- Dining room
- Living room with french doors on to garden
- Double garage with parking for two cars outside
- Lawned rear garden
- Air source heat pump

Francis Jackson Homes reserves the right to make alterations to any development or property without prior notice. Please rely solely upon site inspection and specific enquiries.

Page 1 of 2

For further information or to register your interest in this development please call **01234 717717** or email **sales@francisjackson.co.uk**



Ground floor dimensions

First floor dimensions