

Grange Farm, Gilmorton



Plot 7

£ Sold

3 Bedrooms

Detached

- Large kitchen/dining room
- Woodburner to living room
- Study/family room
- Bedrooms 1, 2 and 3 with en suites
- Underfloor heating to ground floor
- Gas heating supplemented by solar thermal panels
- Single garage
- Turfed front and rear gardens

* Subject to stage of construction

Page 1 of 3

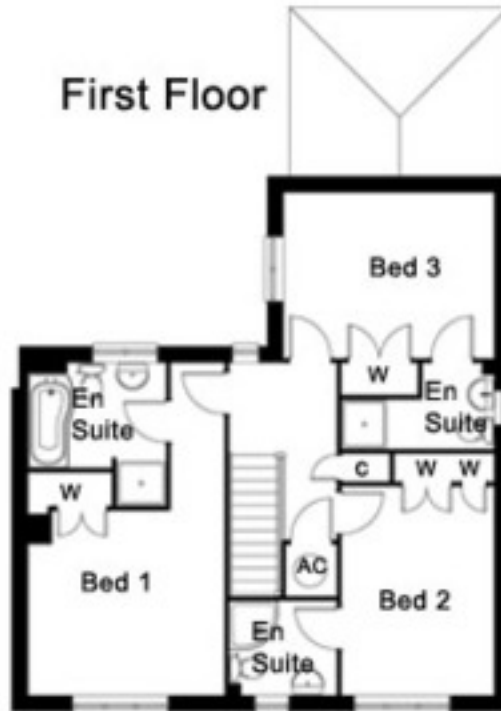
Call 01234 717717 email sales@francisjackson.co.uk visit www.francisjacksonhomes.co.uk

Details are given as a general guide and may be subject to alteration. The plans shown are not to scale and dimensions should be used for reference only and should not be relied upon.

Ground Floor



First Floor



Ground Floor

- Living Room: 6.1m x 3.6m
- Kitchen/Dining Room: 5.9m x 3.9m*
- Utility: 2.7m x 2m
- Study/Family Room: 4m x 2.7m

First Floor

- Bedroom 1: 3.4m (not incl wardrobe) x 3.6m
- En suite 1: 2.5m max x 1.9m
- Bedroom 2: 3.8m (not incl wardrobe) x 2.8m
- En suite 2: 2m x 1.7m
- Bedroom 3: 3.9m x 3m (not incl wardrobe)
- En suite 3: 2.7m* x 1.6m* (incl shower)

* Max

SITE PLAN

