

## Old Farm Lane, Oundle



### Plot 2

£ Sold

3 Bedrooms

Semi Detached

- Large kitchen/family room
- Woodburner to living room
- Bedroom 1 with en suite
- Underfloor heating to ground floor
- Air source heat pump
- Double garage
- Turfed front and rear gardens

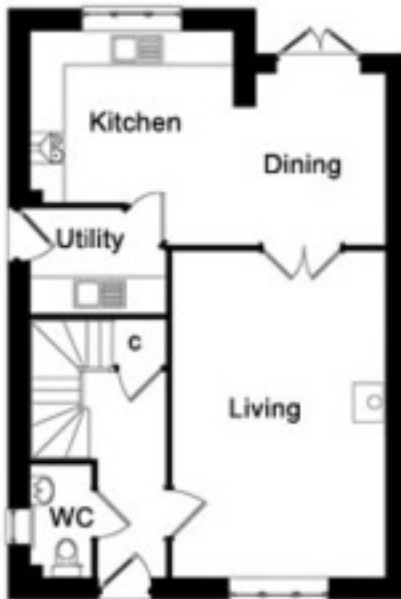
\* Subject to stage of construction

Page 1 of 3

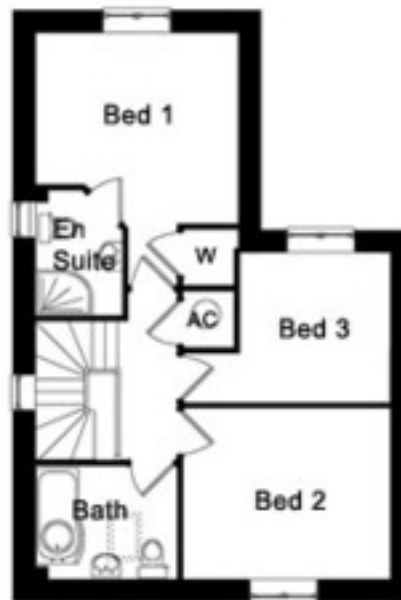
Call 01234 717717 email [sales@francisjackson.co.uk](mailto:sales@francisjackson.co.uk) visit [www.francisjacksonhomes.co.uk](http://www.francisjacksonhomes.co.uk)

Details are given as a general guide and may be subject to alteration. The plans shown are not to scale and dimensions should be used for reference only and should not be relied upon.

### Ground Floor



### First Floor



#### Ground Floor

- Living Room: 5.8m x 3.8m
- Kitchen/Family Room: 6.3m x 3.8m\*
- Utility: 1.9m x 1.9m

#### First Floor

- Bedroom 1: 3.6m x 3.4m\*
- En suite 1: 2.1m x 1.5m
- Bedroom 2: 3.7m x 3m
- Bedroom 3: 2.7m x 2.7m
- Bathroom: 2.8m x 2.8m

\* Max

# SITE PLAN

---

