



Plot 3 | Hermitage Row, Catthorpe

£325,000

3 Bedrooms

ABOUT THIS PROPERTY

- Open plan Kitchen/Family/Dining Room
- Living room with woodburner
- Utility and downstairs WC
- Bedroom 1 with en suite
- Family Bathroom
- Two parking spaces
- Air source heat pump underfloor heating to the ground floor and radiators to first floor

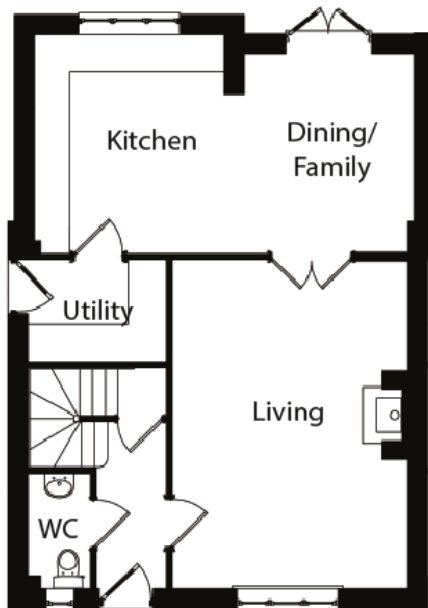
INCLUDED AS STANDARD

- Choice of Symphony kitchen units with granite or quartz worktops and upstand*
- Choice of laminate worktop with splash back tiling to the utility room*
- Integrated Neff kitchen appliances
- Choice of sanitary ware from Ideal Standard Sottini range*
- Choice of Porcelanosa ceramic wall & floor tiles to WC, kitchen, utility, bathroom & en suite*
- Choice of wall paint colours*
- Heated chrome towel rails to bathroom and en suite
- Coving to living room, dining room, hall, stairs and landing
- Alarm to the house
- Outside tap and electric point
- Turf to front and rear gardens

* subject to stage of construction

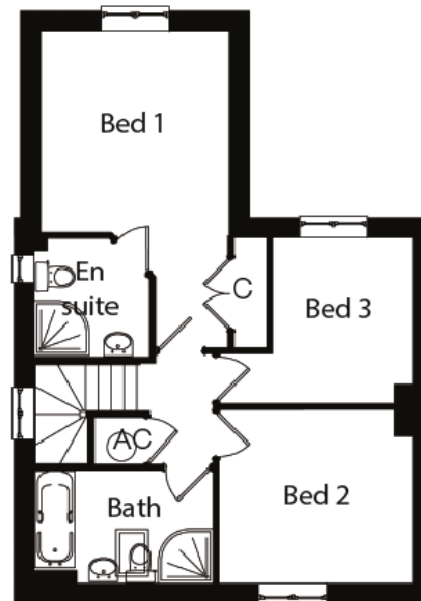
Call 01234 717700 Email sales@francisjackson.co.uk Visit www.francisjacksonhomes.co.uk

Details are given as a general guide and may be subject to alteration. The plans shown are not to scale and dimensions should be used for reference only and should not be relied upon.



GROUND FLOOR DIMENSIONS

- Living room: 5.7m x 4.1m
- Kitchen/Dining: 6.6m x 3.8m*
- Utility: 2.4m x 1.7m
- WC: 2m x 1.1m



FIRST FLOOR DIMENSIONS

- Bedroom 1: 3.5m x 3.3m
- En suite: 2m x 2m
- Bedroom 2: 3.4m x 3m
- Bedroom 3: 2.9m x 2.5m
- Bathroom: 3.1m x 2m

