



Plot 4 | Mill Lane, Gilmorton

£325,000

3 Bedrooms

ABOUT THIS PROPERTY

- Open plan kitchen/dining
- Living room with woodburner
- Utility room
- Downstairs WC
- Bedroom 1 with en suite
- Family bathroom
- Gas fired central heating system
- Garage with additional parking

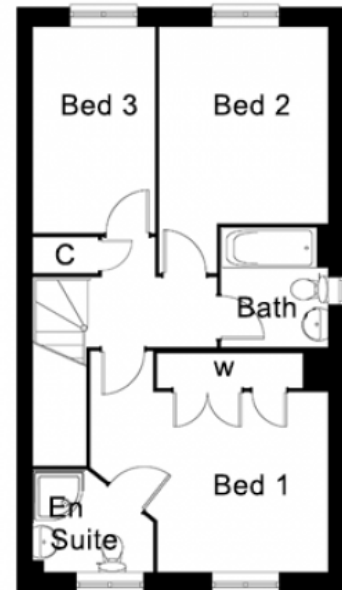
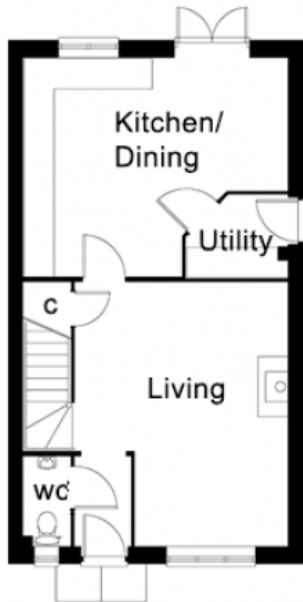
INCLUDED AS STANDARD

- Choice of Symphony kitchen units with granite or quartz worktops and upstand*
- Integrated Neff kitchen appliances*
- Choice of laminate worktop with splash back tiling to the utility room*
- Choice of sanitary ware from Ideal Standard Sottini range*
- Choice of Porcelanosa ceramic wall & floor tiles to WC, kitchen, utility, bathrooms & en suite*
- Choice of wall paint colours*
- Heated chrome towel rails to bathroom and en suite
- Alarm to house and garage
- Outside tap
- Turf to front and rear gardens

* subject to stage of construction

Call 01234 717700 Email sales@francisjackson.co.uk Visit www.francisjacksonhomes.co.uk

Details are given as a general guide and may be subject to alteration. The plans shown are not to scale and dimensions should be used for reference only and should not be relied upon.



GROUND FLOOR DIMENSIONS

- Living room: 5.2m* 3.3m** x 4.2m* 3m**
- Kitchen/dining: 5.2m* 3.1m** x 4.3m* 2.6m**
- Utility: 2m* x 1.6m**
- WC: 1.7m x 0.9m

FIRST FLOOR DIMENSIONS

- Bedroom 1: 4.2m* 3m** x 3.9m* 2m** (incl. wardrobes)
- En suite 1: 2.1m* x 1.8m*
- Bedroom 2: 3.5m x 3m
- Bedroom 3: 3.5m x 2.2m
- Bathroom: 2.1m x 1.9m

