



Plot 1 | Bidwell Lane, Caldecott

 Sold

 4 Bedrooms

ABOUT THIS PROPERTY

- Large open plan kitchen/dining room
- Utility room
- Living room with woodburner
- Family room
- Downstairs WC
- Bedrooms 1 & 2 with en suite bathrooms
- Walk in wardrobe in bedroom 1
- Fibre broadband connection
- Air source heat pump underfloor heating to the ground floor and radiators to first floor
- Detached double garage with additional parking

INCLUDED AS STANDARD

- A. Bell & Co kitchen units with granite or quartz worktops and upstand
- Laminate worktop with splash back tiling to the utility room
- Integrated Neff kitchen appliances
- Sanitary ware from Ideal Standard Sottini and Concept Range
- Porcelanosa ceramic wall & floor tiles to WC, kitchen, utility, bathroom & en suites
- Heated chrome towel rails to bathrooms and en suites
- Coving to living room, study, hall, stairs and landing
- Alarm to the house and garage
- Outside tap
- Turf to front and rear gardens

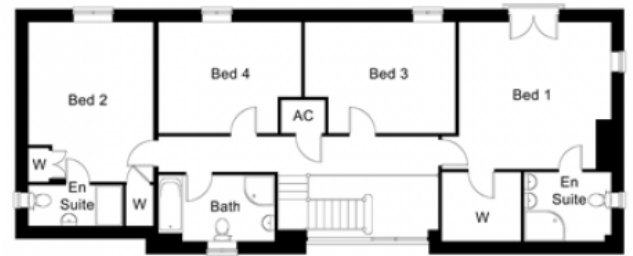
Call 01234 717700 Email sales@francisjackson.co.uk Visit francisjacksonhomes.co.uk

Details are given as a general guide and may be subject to alteration. The plans shown are not to scale and dimensions should be used for reference only and should not be relied upon.



GROUND FLOOR DIMENSIONS

- Kitchen/Dining 10m x 5.4m
- Living room 6.4m x 4.9m
- Family room 6m x 4.1m
- Utility 3.4m x 2.2m
- Store 1.8m x 1.6m
- WC 1.6m x 1.5m



FIRST FLOOR DIMENSIONS

- Bedroom 1 4.4m x 4.3m
- Walk in wardrobe 2.3m x 2m
- En suite 1 2.5m x 2m
- Bedroom 2 4.7m x 3.6m (incl. wardrobe)
- En suite 2 2.7m x 1.2m
- Bedroom 3 4.4m x 3.2m
- Bedroom 4 4.1m x 3.2m
- Bathroom 3.4m x 1.9m

Call 01234 717700 **Email** sales@francisjackson.co.uk **Visit** francisjacksonhomes.co.uk

* max ** min. Details are given as a general guide and may be subject to alteration. The plans shown are not to scale and dimensions should be used for reference only and should not be relied upon.

