



Plot 5 | Bidwell Lane, Caldecott

 Sold

 3 Bedrooms

ABOUT THIS PROPERTY

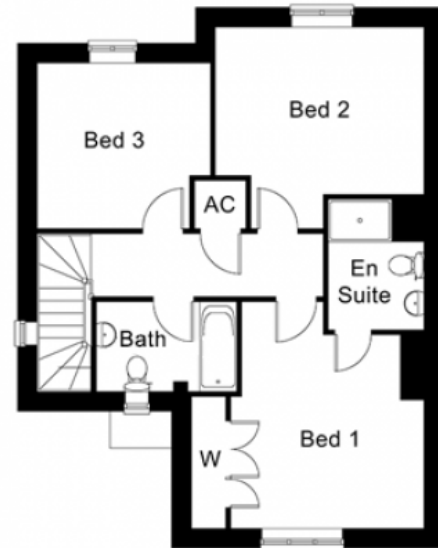
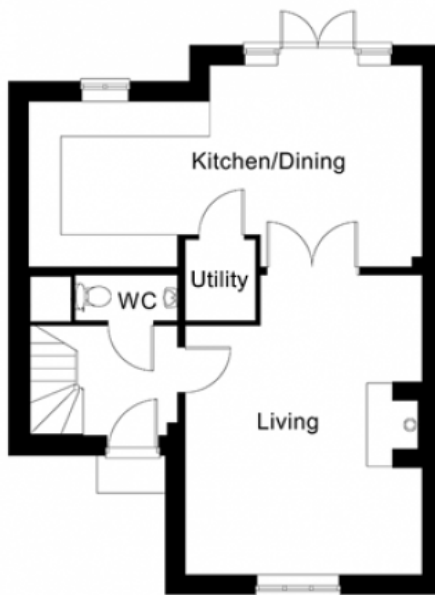
- Open plan kitchen/dining room
- Utility room
- Living room with woodburner
- Downstairs WC
- Bedroom 1 with en suite bathroom
- Air source heat pump underfloor heating to the ground floor and radiators to first floor
- Garage with additional parking

INCLUDED AS STANDARD

- Symphony kitchen units with granite or quartz worktops and upstand
- Laminate worktop with splash back tiling to the utility room
- Integrated Neff kitchen appliances
- Sanitary ware from Ideal Standard Sottini and Concept Range
- Porcelanosa ceramic wall & floor tiles to WC, kitchen, utility, bathroom & en suite
- Heated chrome towel rails to bathrooms and en suite
- Coving to living room, study, hall, stairs and landing
- Alarm to the house and garage
- Outside tap
- Turf to front and rear gardens

Call 01234 717700 **Email** sales@francisjackson.co.uk **Visit** francisjacksonhomes.co.uk

Details are given as a general guide and may be subject to alteration. The plans shown are not to scale and dimensions should be used for reference only and should not be relied upon.



GROUND FLOOR DIMENSIONS

- Kitchen/Dining 7.3m* x 3.7m* 3.1m**
- Living room 5.5m* 4.1m** x 4.4m* 3m**
- Utility 1.5m x 1.3m
- WC 1.9m x 0.8m

FIRST FLOOR DIMENSIONS

- Bedroom 1 4.4m* 3m** x 4.2m* 2.5m** (incl. wardrobes)
- En suite 2.5m* x 1.8m*
- Bedroom 2 3.9m x 3.1m
- Bedroom 3 3.2m x 3.1m
- Bathroom 2.6m x 1.6m

Call 01234 717700 **Email** sales@francisjackson.co.uk **Visit** francisjacksonhomes.co.uk

* max ** min. Details are given as a general guide and may be subject to alteration. The plans shown are not to scale and dimensions should be used for reference only and should not be relied upon.

