



Plot 26 | Mill Lane, Gilmorton

£315,000

3 Bedrooms

ABOUT THIS PROPERTY

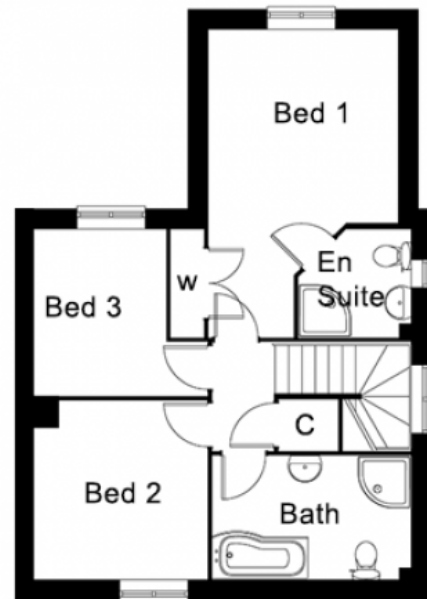
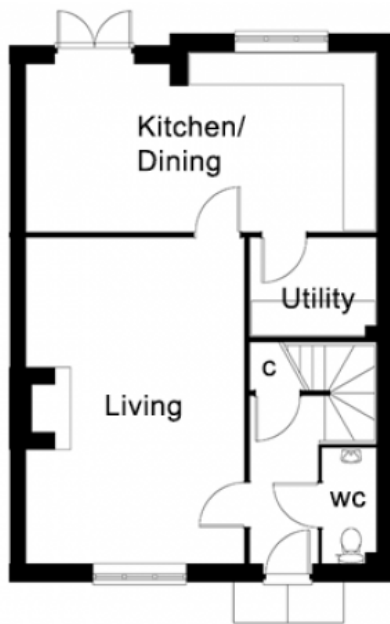
- Open plan kitchen/dining
- Living room with woodburner
- Utility room
- Downstairs WC
- Bedroom 1 with en suite
- Family bathroom
- Fibre broadband connection
- Gas fired central heating system
- Two private parking spaces

INCLUDED AS STANDARD

- Symphony kitchen units with granite or quartz worktops and upstand
- Integrated Neff kitchen appliances
- Laminate worktop with splash back tiling to the utility room
- Sanitary ware from Ideal Standard range
- Porcelanosa ceramic wall & floor tiles to WC, kitchen, utility, bathrooms & en suites
- Heated chrome towel rails to bathroom and en suites
- Alarm to house and garage
- Outside tap
- Turf to front and rear gardens

Call 01234 717700 Email sales@francisjackson.co.uk Visit francisjacksonhomes.co.uk

Details are given as a general guide and may be subject to alteration. The plans shown are not to scale and dimensions should be used for reference only and should not be relied upon.



GROUND FLOOR DIMENSIONS

- Living room: 6.1m x 4.1m
- Kitchen/dining: 6.3m x 3.3m
- Utility: 2.4m x 1.8m
- WC: 2.1m x 1m

FIRST FLOOR DIMENSIONS

- Bedroom 1: 5.3m* 3.3m** x 3.3m* 2.1m** (incl. wardrobe)
- En suite: 1.9m* x 1.9m*
- Bedroom 2: 3.1m x 3m
- Bedroom 3: 2.9m x 2.3m
- Bathroom: 3.4m x 2.1m

Call 01234 717700 **Email** sales@francisjackson.co.uk **Visit** francisjacksonhomes.co.uk

* max ** min. Details are given as a general guide and may be subject to alteration. The plans shown are not to scale and dimensions should be used for reference only and should not be relied upon.

