



Plot 4 | Kirkholme Gardens, Northampton

£695,000



4 Bedrooms

#### ABOUT THIS PROPERTY

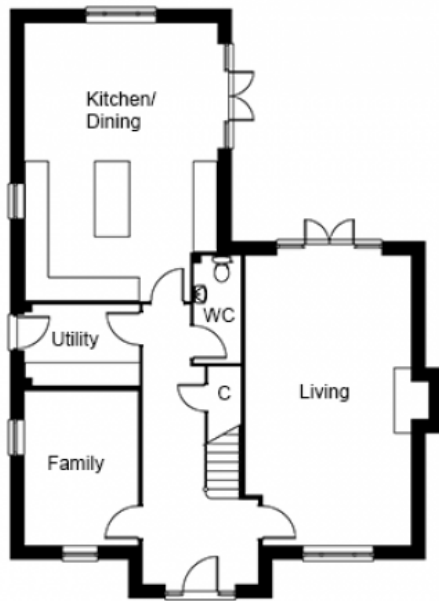
- Open plan kitchen/dining room
- Utility room
- Living room with woodburner
- Family room
- Downstairs WC
- Bedrooms 1 and 2 with en suites
- Family bathroom
- Air source heat pump underfloor heating to the ground floor and radiators to first floor
- Powder coated aluminium windows
- Double garage with automated doors and generous additional parking

#### INCLUDED AS STANDARD

- Symphony kitchen units with granite or quartz worktops and upstand
- A-rated integrated Neff kitchen appliances (double oven, fridge, freezer, induction hob, hood & dishwasher)
- Laminate worktop with splash back tiling to the utility room
- Sanitary ware from Ideal Standard
- Porcelanosa ceramic wall & floor tiles to WC, kitchen, utility, bathrooms & en suites
- Heated chrome towel rails to bathrooms and en suites
- Superfast FTTP broadband available with speeds up to 500Mbps
- Alarm to house and garage
- Turf to front and rear gardens
- Outside tap

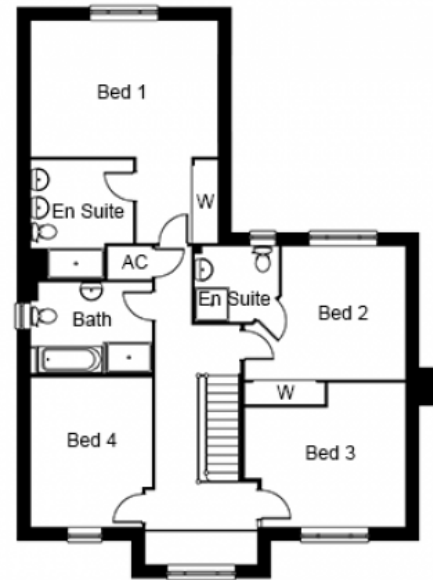
Call 01234 717700 Email [sales@francisjackson.co.uk](mailto:sales@francisjackson.co.uk) Visit [francisjacksonhomes.co.uk](https://francisjacksonhomes.co.uk)

Details are given as a general guide and may be subject to alteration. The plans shown are not to scale and dimensions should be used for reference only and should not be relied upon.



#### GROUND FLOOR DIMENSIONS

- Living room 7.4m x 4.2m
- Kitchen/Dining 7.1m x 4.9m
- Family 3.9m x 2.9m
- Utility 2.9m x 2m
- WC 2.7m x 1.2m



#### FIRST FLOOR DIMENSIONS

- Bedroom 1 5.9m\* 3.6m\*\* x 4.9m\* 2.1m\*\* (incl. wardrobe)
- En suite 3.1m\* x 2.7m\*
- Bedroom 2 4.3m x 3.5m\* (excl. wardrobe)
- En suite 2.2m\* x 2m\*
- Bedroom 3 4.3m\* x 3.8m\*
- Bedroom 4 4m x 3.2m
- Bathroom 3.2m x 2.4m

**Call** 01234 717700 **Email** [sales@francisjackson.co.uk](mailto:sales@francisjackson.co.uk) **Visit** [francisjacksonhomes.co.uk](http://francisjacksonhomes.co.uk)

\* max \*\* min. Details are given as a general guide and may be subject to alteration. The plans shown are not to scale and dimensions should be used for reference only and should not be relied upon.

