



Plot 42 | Lavendon Road, Olney

£650,000

3 Bedrooms

ABOUT THIS PROPERTY

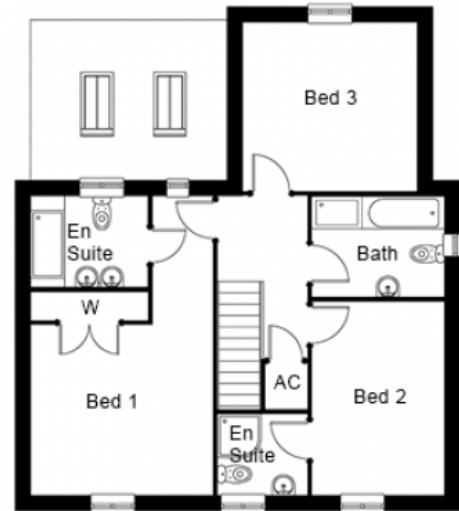
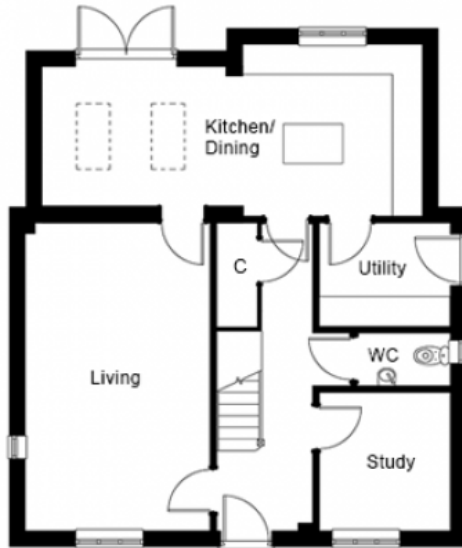
- Ready for occupation December 2021
- Open plan kitchen/dining room
- Living room
- Study
- Utility room
- Downstairs WC
- Bedrooms 1 & 2 with en suites
- Fibre broadband - Up to 1 Gbps
- Gas fitted central heating, underfloor heating to the ground floor and radiators to first floor
- Garage and additional parking

INCLUDED AS STANDARD

- Symphony kitchen units with quartz worktops and upstand
- A-rated integrated Neff kitchen appliances (single oven, combination oven, fridge/freezer, induction hob, hood & dishwasher)
- Laminate worktop with splash back tiling to the utility room
- Sanitary ware from Ideal Standard
- Porcelanosa ceramic wall & floor tiles to WC, kitchen, utility, bathroom & en suites
- Heated chrome towel rails to bathroom and en suites
- Fibre broadband connection
- Alarm to house and garage
- Turf to front and rear gardens
- Outside tap

Call 01234 717700 Email sales@francisjackson.co.uk Visit francisjacksonhomes.co.uk

Details are given as a general guide and may be subject to alteration. The plans shown are not to scale and dimensions should be used for reference only and should not be relied upon.



GROUND FLOOR DIMENSIONS

- Living room: 6.2m x 3.7m
- Kitchen/Dining: 7.6m x 3.4m* 2.8m**
- Study: 2.7m x 2.6m
- Utility: 2.6m x 2m
- WC: 1.8m x 1m

FIRST FLOOR DIMENSIONS

- Bedroom 1: 4.2m x 3.8m (incl. wardrobe)
- En suite 1: 2.4m x 1.8m
- Bedroom 2: 4m x 2.7m
- En suite 2: 1.8m x 1.6m
- Bedroom 3: 3.6m x 3.5m
- Bathroom: 2.7m x 2m

Call 01234 717700 **Email** sales@francisjackson.co.uk **Visit** francisjacksonhomes.co.uk

* max ** min. Details are given as a general guide and may be subject to alteration. The plans shown are not to scale and dimensions should be used for reference only and should not be relied upon.

