



Plot 11 | Oakridge, North Kilworth

£ Sold

3 Bedrooms

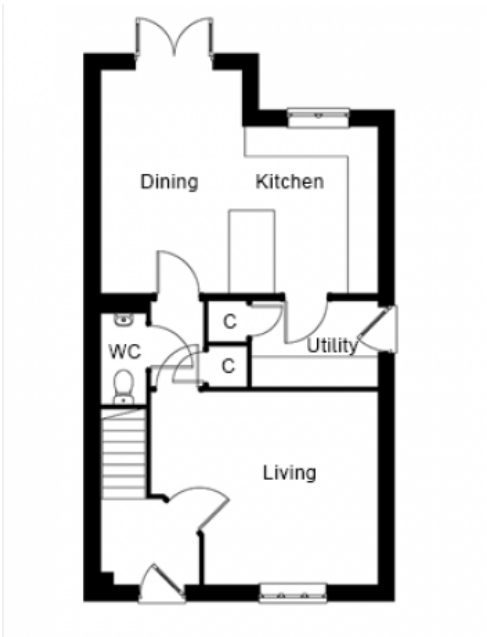
ABOUT THIS PROPERTY

INCLUDED AS STANDARD

- Open plan kitchen/dining room
- Utility room
- Living room
- Downstairs WC
- Bedroom 1 with en suite
- Family bathroom
- Fibre broadband - Up to 1 Gbps
- Air source heat pump providing underfloor heating to the ground floor and radiators to first floor
- Garage and additional parking

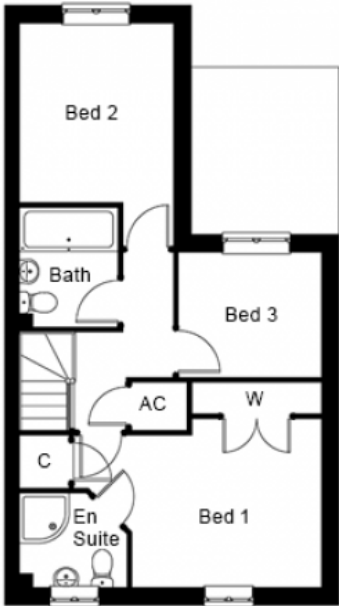
Call 01234 717700 Email sales@francisjackson.co.uk Visit francisjacksonhomes.co.uk

Details are given as a general guide and may be subject to alteration. The plans shown are not to scale and dimensions should be used for reference only and should not be relied upon.



GROUND FLOOR DIMENSIONS

- Living room: 4.5m* x 3.8m*
- Kitchen: 3.3m x 2.7m
- Dining: 4.4m x 2.8m
- Utility: 2.5m x 1.7m
- WC: 1.8m x 0.9m



FIRST FLOOR DIMENSIONS

- Bedroom 1: 4.5m* x 3.7m* (incl. wardrobe)
- En suite 1: 1.9m x 1.7m
- Bedroom 2: 3.2m** x 2.8m
- Bedroom 3: 2.6m x 2.2m
- Bathroom: 2.1m x 1.8m

