



Plot 10 | Oakridge, North Kilworth

£325,000



3 Bedrooms

ABOUT THIS PROPERTY

- Open plan kitchen/dining room
- Utility room
- Living room
- Downstairs WC
- Bedroom 1 with en suite
- Family bathroom
- Fibre broadband - Up to 1 Gbps
- Air source heat pump providing underfloor heating to the ground floor and radiators to first floor
- Garage and additional parking

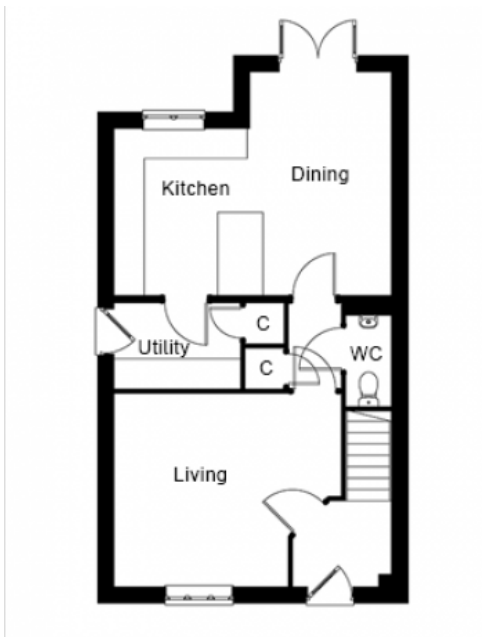
INCLUDED AS STANDARD

- Choice of Symphony kitchen units with quartz worktops and upstand*
- A-rated integrated Neff kitchen appliances (single oven, combination oven, fridge/freezer, induction hob, hood & dishwasher)
- Choice of laminate worktop with splash back tiling to the utility room*
- Choice of sanitary ware from Ideal Standard*
- Choice of Porcelanosa ceramic wall & floor tiles to WC, kitchen, utility, bathroom & en suite*
- Choice of wall paint colours*
- Heated chrome towel rails to bathroom and en suite
- Fibre broadband connection
- Alarm to house and garage
- Turf to front and rear gardens
- Outside tap

* subject to stage of construction

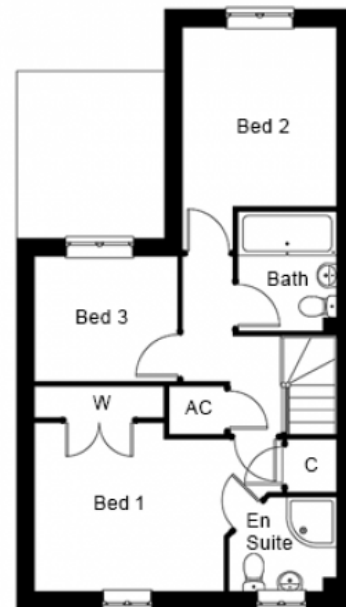
Call 01234 717700 Email sales@francisjackson.co.uk Visit francisjacksonhomes.co.uk

Details are given as a general guide and may be subject to alteration. The plans shown are not to scale and dimensions should be used for reference only and should not be relied upon.



GROUND FLOOR DIMENSIONS

- Living room: 4.5m* x 3.8m*
- Kitchen: 3.3m x 2.7m
- Dining: 4.4m x 2.8m
- Utility: 2.5m x 1.7m
- WC: 1.8m x 0.9m



FIRST FLOOR DIMENSIONS

- Bedroom 1: 4.5m* x 3.7m* (incl. wardrobe)
- En suite 1: 1.9m x 1.7m
- Bedroom 2: 3.2m** x 2.8m
- Bedroom 3: 2.6m x 2.2m
- Bathroom: 2.1m x 1.8m



Call 01234 717700 Email sales@francisjackson.co.uk Visit francisjacksonhomes.co.uk

Details are given as a general guide and may be subject to alteration. The plans shown are not to scale and dimensions should be used for reference only and should not be relied upon.