



Plot 7 | ,

£ Sold

5 Bedrooms

ABOUT THIS PROPERTY

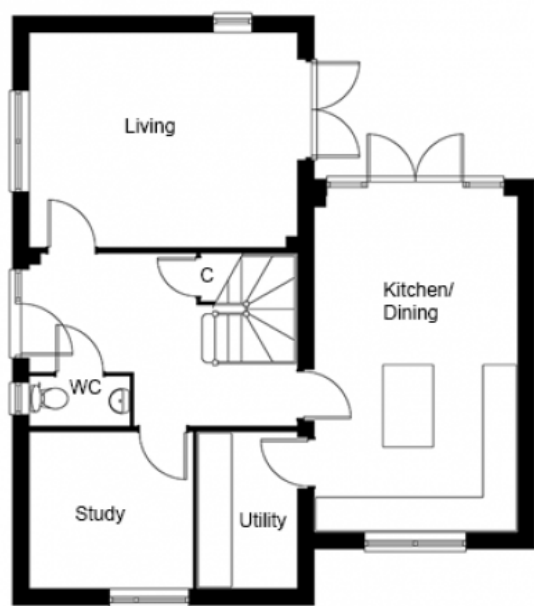
- Ready for occupation
- Part exchange considered
- Open plan kitchen/dining room
- Utility room
- Study
- Downstairs WC
- Bedrooms 1 and 2 with en suites
- Family bathroom
- Gas heating with underfloor heating to the ground floor and radiators to first floor
- Powder coated aluminium windows
- Garage with automated door and generous additional parking

INCLUDED AS STANDARD

- Symphony kitchen units with granite or quartz worktops and upstand
- Integrated NEFF kitchen appliances (single oven, combination oven, fridge/freezer, induction hob, hood & dishwasher)
- Laminate worktop with splash back tiling to the utility room
- Sanitary ware from Ideal Standard
- Porcelanosa ceramic wall & floor tiles to WC, kitchen, utility, bathrooms & en suites
- Heated chrome towel rails to bathrooms and en suites
- Superfast FTTP broadband available with speeds up to 500Mbps
- Alarm to house and garage
- Turf to front and rear gardens
- Outside tap

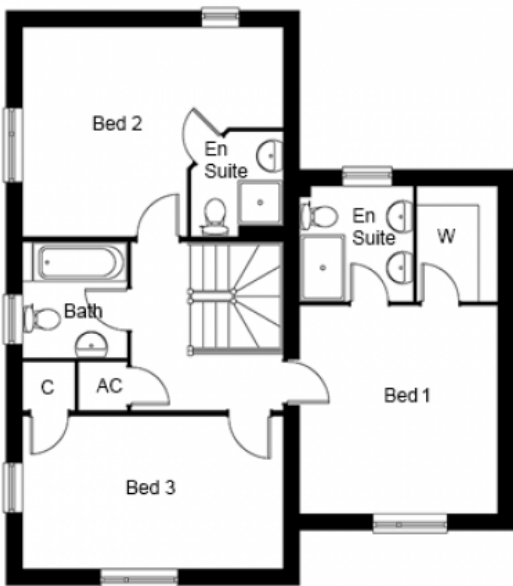
Call 01234 717700 Email sales@francisjackson.co.uk Visit francisjacksonhomes.co.uk

Details are given as a general guide and may be subject to alteration. The plans shown are not to scale and dimensions should be used for reference only and should not be relied upon.



GROUND FLOOR DIMENSIONS

- Living room 4.7m x 3.8m
- Kitchen/Dining 6m x 3.6m
- Study 2.8m x 2.7m
- Utility 2.7m x 1.7m
- WC 1.7m x 0.8m

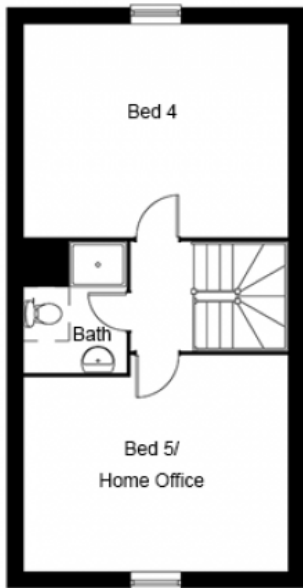


FIRST FLOOR DIMENSIONS

- Bedroom 1 3.8m x 3.5m
- Walk in wardrobe 2m x 1.4m
- En suite 2m x 2m
- Bedroom 2 4.7m* x 3.8m*
- En suite 1.9m x 1.6m
- Bedroom 3 4.7m x 2.7m
- Bathroom 2.1m x 1.8m

Call 01234 717700 Email sales@francisjackson.co.uk Visit francisjacksonhomes.co.uk

Details are given as a general guide and may be subject to alteration. The plans shown are not to scale and dimensions should be used for reference only and should not be relied upon.



SECOND FLOOR DIMENSIONS

- Bedroom 4 4.7m x 3.8m
- Bedroom 5/Home Office 4.7m* x 3.9m*
- Bathroom 2.3m x 1.8m

