



Plot 11 | Park View, Priors Hall Park

£535,000

5 Bedrooms

#### ABOUT THIS PROPERTY

- Open plan kitchen/dining room
- Utility room
- Study
- Downstairs WC
- Bedrooms 1 and 2 with en suites
- Family bathroom
- Gas heating with underfloor heating to the ground floor and radiators to first floor
- Powder coated aluminium windows
- Garage with automated door and generous additional parking

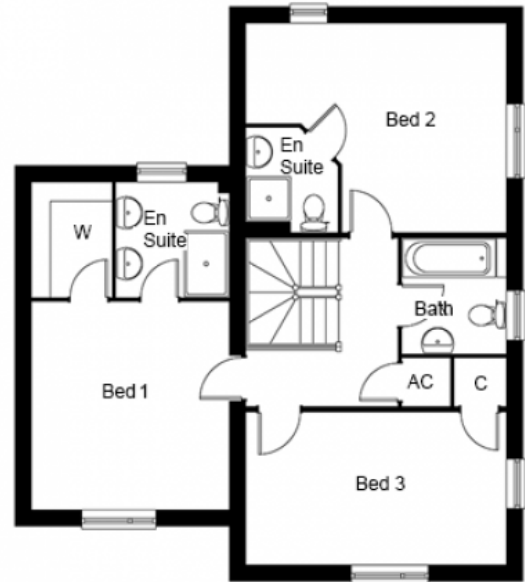
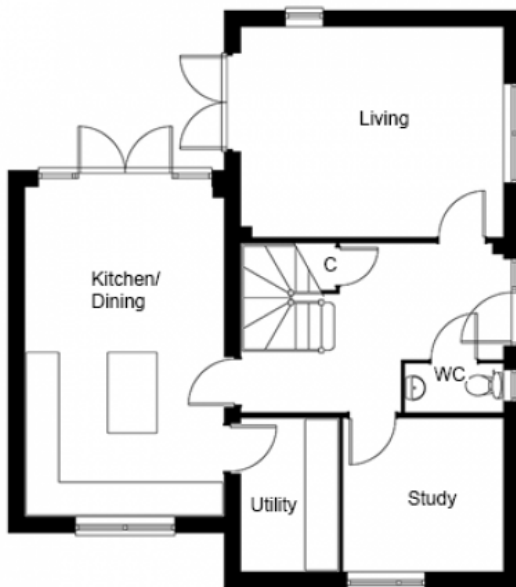
#### INCLUDED AS STANDARD

- Choice of Symphony kitchen units with granite or quartz worktops and upstand\*
- A-rated integrated Neff kitchen appliances (single oven, combination oven, fridge/freezer, induction hob, hood & dishwasher)
- Choice of laminate worktop with splash back tiling to the utility room\*
- Choice of sanitary ware from Ideal Standard\*
- Choice of Porcelanosa ceramic wall & floor tiles to WC, kitchen, utility, bathrooms & en suites\*
- Choice of wall paint colours\*
- Heated chrome towel rails to bathrooms and en suites
- Superfast FTTP broadband available with speeds up to 500Mbps
- Alarm to house and garage
- Turf to front and rear gardens
- Outside tap

Call 01234 717700 Email [sales@francisjackson.co.uk](mailto:sales@francisjackson.co.uk) Visit [francisjacksonhomes.co.uk](https://francisjacksonhomes.co.uk)

\* subject to stage of construction

Details are given as a general guide and may be subject to alteration. The plans shown are not to scale and dimensions should be used for reference only and should not be relied upon.



#### GROUND FLOOR DIMENSIONS

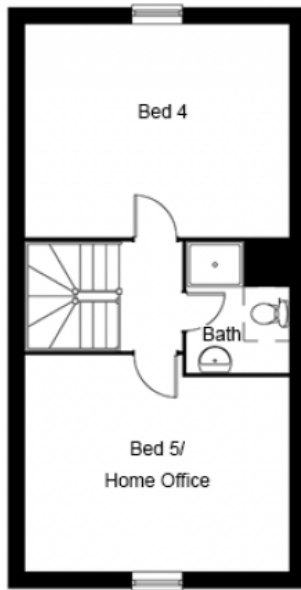
- Living room 4.7m x 3.8m
- Kitchen/Dining 6m x 3.6m
- Study 2.8m x 2.7m
- Utility 2.7m x 1.7m
- WC 1.7m x 0.8m

#### FIRST FLOOR DIMENSIONS

- Bedroom 1 3.8m x 3.5m
- Walk in wardrobe 2m x 1.4m
- En suite 2m x 2m
- Bedroom 2 4.7m\* x 3.8m\*
- En suite 1.9m x 1.6m
- Bedroom 3 4.7m x 2.7m
- Bathroom 2.1m x 1.8m

Call 01234 717700 Email [sales@francisjackson.co.uk](mailto:sales@francisjackson.co.uk) Visit [francisjacksonhomes.co.uk](http://francisjacksonhomes.co.uk)

\* max \*\* min. Details are given as a general guide and may be subject to alteration. The plans shown are not to scale and dimensions should be used for reference only and should not be relied upon.



## SECOND FLOOR DIMENSIONS

---

- Bedroom 4 4.7m x 3.8m
- Bedroom 5/Home Office 4.7m\* x 3.9m\*
- Bathroom 2.3m x 1.8m

**Call** 01234 717700 **Email** [sales@francisjackson.co.uk](mailto:sales@francisjackson.co.uk) **Visit** [francisjacksonhomes.co.uk](http://francisjacksonhomes.co.uk)

\* max \*\* min. Details are given as a general guide and may be subject to alteration. The plans shown are not to scale and dimensions should be used for reference only and should not be relied upon.

