



Plot 15 | Oakridge, North Kilworth

£540,000



4 Bedrooms

#### ABOUT THIS PROPERTY

- Open plan kitchen/dining room
- Utility room
- Living room with woodburner
- Study
- Downstairs WC
- Bedrooms 1 & 2 with en suite shower rooms
- Family bathroom
- Fibre broadband - up to 1Gbps
- Air source heat pump, underfloor heating to the ground floor and radiators to first floor
- Detached double garage with additional parking

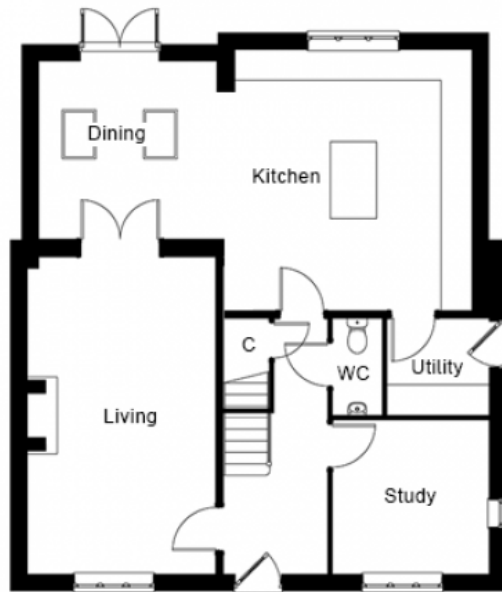
#### INCLUDED AS STANDARD

- Choice of Symphony kitchen units with quartz worktops and upstand\*
- A-rated integrated Neff kitchen appliances (single oven, combination oven, fridge/freezer, induction hob, hood & dishwasher)
- Choice of laminate worktop with splash back tiling to the utility room\*
- Choice of sanitary ware from Ideal Standard\*
- Choice of Porcelanosa ceramic wall & floor tiles to WC, kitchen, utility, bathroom & en suites\*
- Choice of wall paint colours\*
- Heated chrome towel rails to bathroom and en suites
- Fibre broadband connection
- Alarm to house and garage
- Turf to front and rear gardens
- Outside tap

\* subject to stage of construction

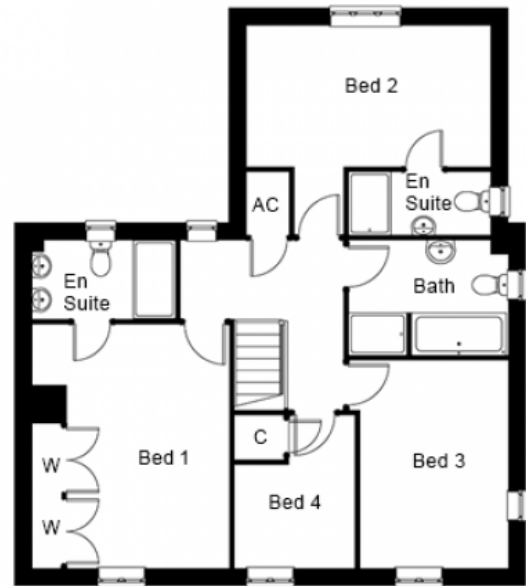
Call 01234 717700 Email [sales@francisjackson.co.uk](mailto:sales@francisjackson.co.uk) Visit [francisjacksonhomes.co.uk](https://francisjacksonhomes.co.uk)

Details are given as a general guide and may be subject to alteration. The plans shown are not to scale and dimensions should be used for reference only and should not be relied upon.



#### GROUND FLOOR DIMENSIONS

- Living room: 6.1m x 3.6m
- Kitchen: 5.1m x 4.6m
- Dining: 3.8m x 3.4m
- Study: 3m x 3m
- Utility: 1.9m x 1.8m
- WC: 1.8m x 0.9m



#### FIRST FLOOR DIMENSIONS

- Bedroom 1: 4.6m x 3.7m (incl. wardrobes)
- En suite 1: 2.7m x 1.5m
- Bedroom 2: 4.6m x 2.6m
- En suite 2: 2.6m x 1.2m
- Bedroom 3: 3.9m x 2.8m
- Bedroom 4: 2.8m\* x 2.2m
- Bathroom: 3m x 2.1m

**Call** 01234 717700 **Email** [sales@francisjackson.co.uk](mailto:sales@francisjackson.co.uk) **Visit** [francisjacksonhomes.co.uk](http://francisjacksonhomes.co.uk)

\* max \*\* min. Details are given as a general guide and may be subject to alteration. The plans shown are not to scale and dimensions should be used for reference only and should not be relied upon.

