



Plot 14 | ,

£ Sold

4 Bedrooms

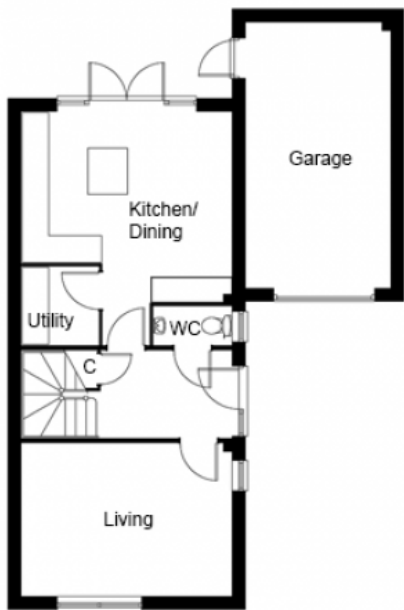
ABOUT THIS PROPERTY

INCLUDED AS STANDARD

- Open plan kitchen/dining room
- Utility room
- Downstairs WC
- Bedrooms 1 and 2 with en suites
- Family bathroom
- Gas heating with underfloor heating to the ground floor and radiators to first floor
- Powder coated aluminium windows
- Integral garage with automated door and additional parking

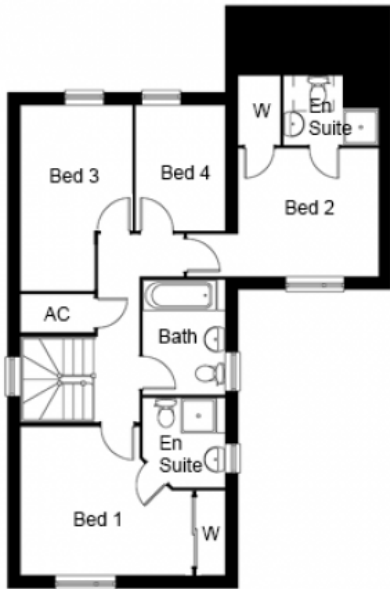
Call 01234 717700 Email sales@francisjackson.co.uk Visit francisjacksonhomes.co.uk

Details are given as a general guide and may be subject to alteration. The plans shown are not to scale and dimensions should be used for reference only and should not be relied upon.



GROUND FLOOR DIMENSIONS

- Living room 4.7m x 3.4m
- Kitchen/Dining 4.7m x 4.3m
- Utility 1.7m x 1.7m
- WC 1.7m x 0.8m



FIRST FLOOR DIMENSIONS

- Bedroom 1 4.6m* x 3.4m* (incl. wardrobe)
- En suite 2m x 1.9m
- Bedroom 2 3.2m x 2.9m
- En suite 2.2m x 1.6m
- Bedroom 3 4.3m* x 2.5m*
- Bedroom 4 2.9m x 2m
- Bathroom 2.6m x 1.9m

