



Plot 15 | Park View, Priors Hall Park

£385,000

4 Bedrooms

ABOUT THIS PROPERTY

- Open plan kitchen/dining room
- Utility room
- Downstairs WC
- Bedrooms 1 and 2 with en suites
- Family bathroom
- Gas heating with underfloor heating to the ground floor and radiators to first floor
- Powder coated aluminium windows
- Integral garage with automated door and additional parking

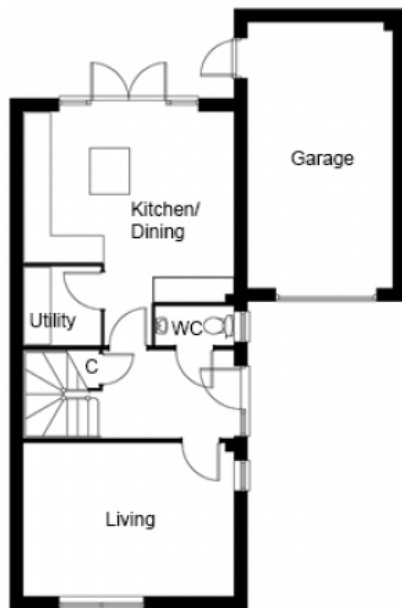
INCLUDED AS STANDARD

- Choice of Symphony kitchen units with granite or quartz worktops and upstand*
- A-rated integrated Neff kitchen appliances (single oven, combination oven, fridge/freezer, induction hob, hood & dishwasher)
- Choice of laminate worktop with splash back tiling to the utility room*
- Choice of sanitary ware from Ideal Standard*
- Choice of Porcelanosa ceramic wall & floor tiles to WC, kitchen, utility, bathrooms & en suites*
- Choice of wall paint colours*
- Heated chrome towel rails to bathrooms and en suites
- Superfast FTTP broadband available with speeds up to 500Mbps
- Alarm to house and garage
- Turf to front and rear gardens
- Outside tap

Call 01234 717700 Email sales@francisjackson.co.uk Visit francisjacksonhomes.co.uk

* subject to stage of construction

Details are given as a general guide and may be subject to alteration. The plans shown are not to scale and dimensions should be used for reference only and should not be relied upon.



GROUND FLOOR DIMENSIONS

- Living room 4.7m x 3.4m
- Kitchen/Dining 4.7m x 4.3m
- Utility 1.7m x 1.7m
- WC 1.7m x 0.8m

FIRST FLOOR DIMENSIONS

- Bedroom 1 4.6m* x 3.4m* (incl. wardrobe)
- En suite 2m x 1.9m
- Bedroom 2 3.2m x 2.9m
- En suite 2.2m x 1.6m
- Bedroom 3 4.3m* x 2.5m*
- Bedroom 4 2.9m x 2m
- Bathroom 2.6m x 1.9m

Call 01234 717700 **Email** sales@francisjackson.co.uk **Visit** francisjacksonhomes.co.uk

* max ** min. Details are given as a general guide and may be subject to alteration. The plans shown are not to scale and dimensions should be used for reference only and should not be relied upon.

