



Plot 4 | Cotterstock Road, Glapthorn

£ Sold 3 Bedrooms

ABOUT THIS PROPERTY

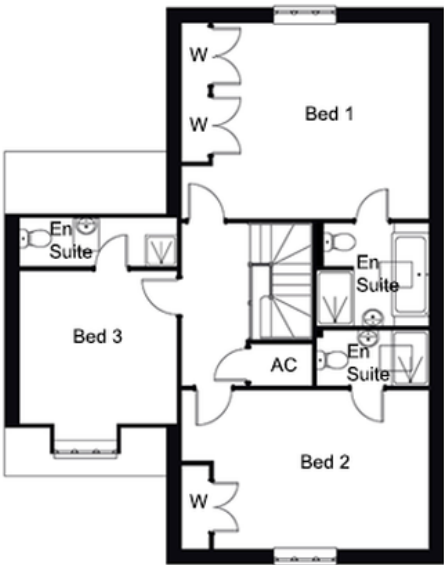
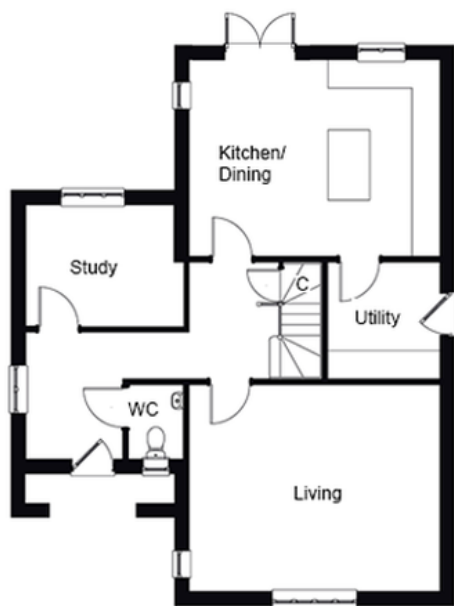
- Ready for occupation
- Open plan kitchen/dining room
- Living room
- Study
- Utility room
- Downstairs WC
- All bedrooms with en suites
- Fibre broadband - Up to 1 Gbps
- Air source heat pump, underfloor heating to the ground floor and radiators to first floor
- Very generous parking area
- EV charging point
- Views over open fields

INCLUDED AS STANDARD

- Symphony kitchen units with quartz worktops and upstand
- Integrated NEFF kitchen appliances (single oven, combination oven, fridge/freezer, induction hob, hood & dishwasher)
- Sanitary ware from Ideal Standard
- Porcelanosa ceramic wall & floor tiles to WC, kitchen & en suites
- Heated chrome towel rails to en suites
- Superfast FTTP broadband available with speeds up to 1 Gbps
- Alarm to house
- Turf to front and rear gardens
- Outside tap

Call 01234 717700 Email sales@francisjackson.co.uk Visit francisjacksonhomes.co.uk

Details are given as a general guide and may be subject to alteration. The plans shown are not to scale and dimensions should be used for reference only and should not be relied upon.



GROUND FLOOR DIMENSIONS

- Living room: 5.3m x 4.4m
- Kitchen/Dining: 5.3m x 4.2m
- Study: 3.3m x 2.5m
- Utility: 2.4m x 2.3m
- WC: 1.5m x 1.1m

FIRST FLOOR DIMENSIONS

- Bedroom 1: 5.3m x 4.1m (incl. wardrobes)
- En suite: 2.4m x 2.2m
- Bedroom 2: 5.3m x 3.4m (incl. wardrobe)
- En suite: 2.4m x 1.2m
- Bedroom 3: 3.4m max x 3.3m
- En suite: 3.3m x 1.2m

