



Plot 14 | West Brook Fields, Yardley Hastings

£ Sold

🛏 3 Bedrooms

ABOUT THIS PROPERTY

- Open plan kitchen/dining room
- Utility room
- Living room
- Downstairs WC
- Bedroom 1 with en suite
- Family bathroom
- Fibre broadband - Up to 1 Gbps
- Air source heat pump providing underfloor heating to the ground floor and radiators to first floor
- Parking

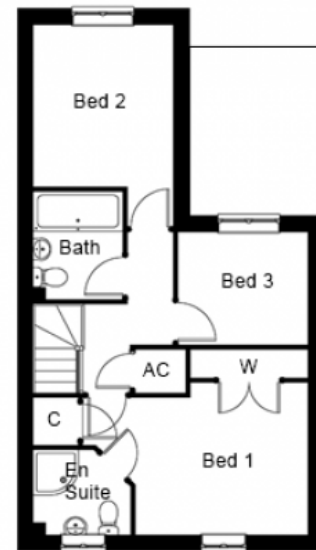
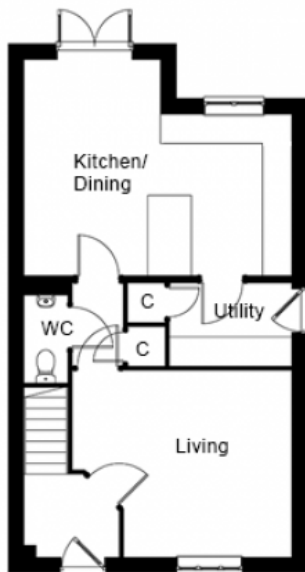
INCLUDED AS STANDARD

- Choice of Symphony kitchen units with granite or quartz worktops and upstand*
- Integrated NEFF kitchen appliances (single oven, combination oven, fridge/freezer, induction hob, hood & dishwasher)
- Choice of sanitary ware from Ideal Standard*
- Choice of Porcelanosa ceramic wall & floor tiles to WC, kitchen, bathrooms & en suite*
- Choice of wall paint colours*
- Heated chrome towel rails to bathroom and en suite
- Superfast FTTP broadband available with speeds up to 1 Gbps
- Alarm to house
- Turf to front and rear gardens
- Outside tap

* subject to stage of construction

Call 01234 717700 Email sales@francisjackson.co.uk Visit francisjacksonhomes.co.uk

Details are given as a general guide and may be subject to alteration. The plans shown are not to scale and dimensions should be used for reference only and should not be relied upon.



GROUND FLOOR DIMENSIONS

- Living room: 4.5m max x 3.8m max
- Kitchen: 3.3m x 2.7m
- Dining: 4.4m x 2.8m
- Utility: 2.5m x 1.7m
- WC: 1.8m x 0.9m

FIRST FLOOR DIMENSIONS

- Bedroom 1: 4.5m max x 3.7m max (incl. wardrobe)
- En suite 1: 1.9m x 1.7m
- Bedroom 2: 3.2m min x 2.8m
- Bedroom 3: 2.6m x 2.2m
- Bathroom: 2.1m x 1.8m

Call 01234 717700 Email sales@francisjackson.co.uk Visit francisjacksonhomes.co.uk

Details are given as a general guide and may be subject to alteration. The plans shown are not to scale and dimensions should be used for reference only and should not be relied upon.

