



Plot 2 | Southwick Road, Glapthorn

£ Sold

 3 Bedrooms

#### ABOUT THIS PROPERTY

- Open plan kitchen/dining room
- Living room
- Study
- Utility room
- Downstairs WC
- Beds 1 & 2 with en suites
- Fibre broadband - Up to 1 Gbps
- Air source heat pump, underfloor heating to the ground floor and radiators to first floor
- Garage
- EV charging point

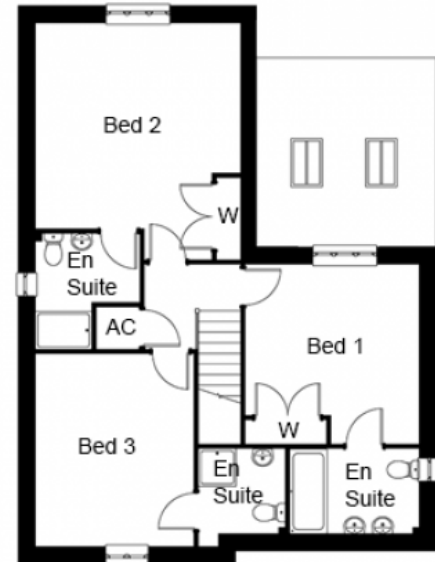
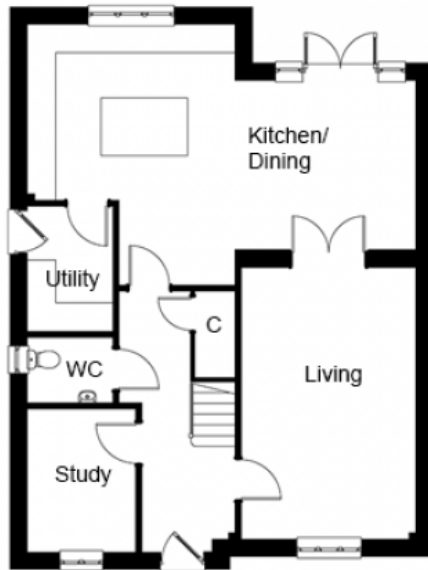
#### INCLUDED AS STANDARD

- Choice of Symphony kitchen units with quartz worktops and upstand\*
- Integrated NEFF kitchen appliances (single oven, combination oven, fridge/freezer, induction hob, hood & dishwasher)
- Choice of sanitary ware from Ideal Standard\*
- Choice of Porcelanosa ceramic wall & floor tiles to WC, kitchen, bathroom & en suites\*
- Choice of wall paint colours\*
- Heated chrome towel rails to bathroom and en suites
- Superfast FTTP broadband available with speeds up to 1 Gbps
- Alarm to house and garage
- Turf to front and rear gardens
- Outside tap

\* subject to stage of construction

Call 01234 717700 Email [sales@francisjackson.co.uk](mailto:sales@francisjackson.co.uk) Visit [francisjacksonhomes.co.uk](https://francisjacksonhomes.co.uk)

Details are given as a general guide and may be subject to alteration. The plans shown are not to scale and dimensions should be used for reference only and should not be relied upon.



#### GROUND FLOOR DIMENSIONS

- Living room: 5.7m x 3.7m
- Kitchen/Dining: 8.1m max 4.4m min x 5.5m max 3.5m min
- Study: 3m x 2.3m
- Utility: 2.6m x 1.8m
- WC: 1.8m x 1.4m

#### FIRST FLOOR DIMENSIONS

- Bedroom 1: 3.8m x 3.7m (incl. wardrobe)
- En suite: 2.7m x 1.8m
- Bedroom 2: 5m max 4.4m min x 4.4m max (incl. wardrobe)
- En suite: 2.2m x 1.5m (excl. shower)
- Bedroom 3: 4.1m x 3.4m
- En suite: 1.8m x 1.8m

Call 01234 717700 Email [sales@francisjackson.co.uk](mailto:sales@francisjackson.co.uk) Visit [francisjacksonhomes.co.uk](http://francisjacksonhomes.co.uk)

Details are given as a general guide and may be subject to alteration. The plans shown are not to scale and dimensions should be used for reference only and should not be relied upon.

