



Plot 22 | Houlton, Rugby

£ Sold

5 Bedrooms

ABOUT THIS PROPERTY

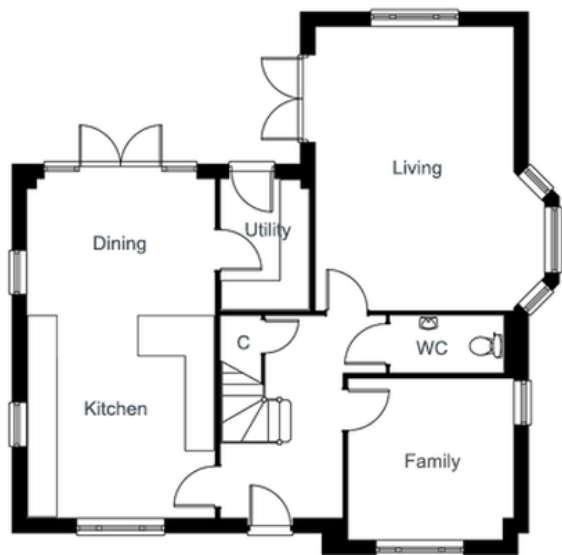
- Ready for occupation
- Open plan kitchen/dining room
- Living room
- Family room
- Utility room
- Downstairs WC
- Beds 1 & 2 with en suites
- Walk in wardrobe in bed 1
- Fibre broadband - Up to 1 Gbps
- Air source heat pump, underfloor heating to the ground floor and radiators to upper floors
- Garage

INCLUDED AS STANDARD

- Symphony kitchen units with quartz worktops and upstand
- Integrated NEFF (or equivalent) kitchen appliances (single oven, combination oven, fridge/freezer, induction hob, hood & dishwasher)
- Sanitary ware from Ideal Standard
- Porcelanosa ceramic wall & floor tiles to WC, kitchen, bathroom & en suites
- Chrome towel rails to all bathrooms
- Superfast FTTP broadband available with speeds up to 1 Gbps
- Alarm to house and garage
- EV charging point
- Turf to front and rear gardens
- Outside tap

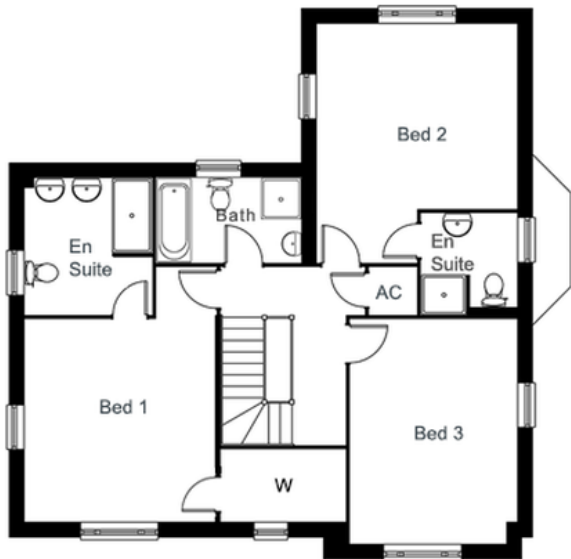
Call 01234 717700 Email [sales@francisjackson.co.uk](mailto:sales@francisjackson.co.uk) Visit [francisjacksonhomes.co.uk](https://francisjacksonhomes.co.uk)

Details are given as a general guide and may be subject to alteration. The plans shown are not to scale and dimensions should be used for reference only and should not be relied upon.



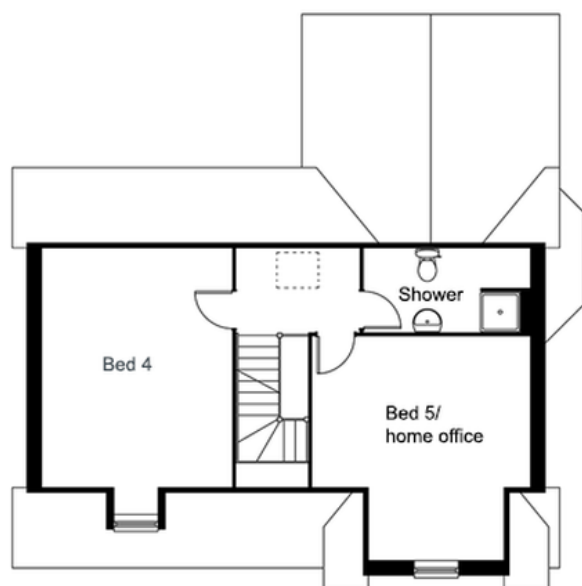
GROUND FLOOR DIMENSIONS

- Living room 5.8m x 4m (excl. bay window)
- Kitchen/Dining 6.9m x 3.8m
- Family 3.3m x 3.3m
- Utility 2.6m x 1.8m
- WC 2.3m x 1.1m



FIRST FLOOR DIMENSIONS

- Bedroom 1 4.1m x 3.8m
- En suite 2.7m x 2.5m
- Walk in wardrobe 2.5m x 1.4m
- Bedroom 2 4.8m max x 4m max
- En suite 2m x 1.9m
- Bedroom 3 4.5m x 3.3m
- Bathroom 3.1m x 1.7m



## SECOND FLOOR DIMENSIONS

- Bedroom 4 4.8m x 3.8m (excl.dormer)
- Bedroom5/home office 4.6m max x 4.4m max
- Shower room 3.4m x 1.7m

Call 01234 717700 Email [sales@francisjackson.co.uk](mailto:sales@francisjackson.co.uk) Visit [francisjacksonhomes.co.uk](http://francisjacksonhomes.co.uk)

Details are given as a general guide and may be subject to alteration. The plans shown are not to scale and dimensions should be used for reference only and should not be relied upon.

