



FRANCIS JACKSON HOMES
AT
PRIORS HALL PARK



FRANCIS JACKSON HOMES AT PRIORS HALL PARK

Homes designed exclusively for Priors Hall Park

Francis Jackson Homes are delighted to be building our third development at Priors Hall Park. Located in zone 3, on the edge of the archaeological preservation area, the homes will overlook a new play area and amphitheatre. As always, our high standard specification and excellent build quality will define our new homes, enriching the growing community at Priors Hall Park.



ABOUT FRANCIS JACKSON HOMES

A family owned housebuilding company specialising in well built homes across the South Midlands



Francis Jackson Homes has established a reputation as one of the very best housebuilders in the region with attention to detail and quality of finish second to none.

We pride ourselves in offering an exceptionally high standard finish to our energy efficient new homes, which includes air source heat pumps, underfloor heating to ground floors (houses only) and an EV charging point for every property.

Our aim is to offer our customers as much choice and input into their new home where possible, subject to the stage of construction. This flexibility is rarely available when buying a new home and sets us apart from other housebuilders.

We are committed to not only building the best quality homes but also ensuring our customer care service is of the highest quality. We are proud to have many of our purchasers return to buy a second and in a few cases a third home from us over the years, which is a great endorsement of the quality of our homes.

Francis Jackson Homes are proud to have won a number of prestigious national building awards including The Sunday Times Build Quality Award and the LABC Warranty Developer of the Year. In 2020 we were selected as finalists for 'Small Housebuilder of the Year' in the national awards for Housebuilder magazine and highly commended for our Willowhurst development at Priors Hall Park.



DESIGNED DOWN TO THE LAST DETAIL

Francis Jackson Homes pride themselves on an exceptionally high quality standard finish and specification



All our homes are sold with an in house 2 year warranty (covering defects in materials or workmanship) and a 10 year LABC warranty (structural).

All items listed below are included in our standard specification:

- Central heating provided by an air source heat pump
- Zoned underfloor heating to the ground floor and radiators to upper floors**
- Individually designed Symphony Gallery range kitchen units with quartz worktops and upstand*
- Laminate worktop with splash back tiling to the utility room*
- Integrated NEFF (or equivalent) kitchen appliances (single oven, fridge/freezer, induction hob, hood and dishwasher)
- Ideal Standard sanitary ware*

- Porcelanosa floor tiles in kitchen, utility and bathrooms (half height wall tiles to bathrooms, full height within shower areas)*
- Chrome towel rails to all bathrooms
- FTTP broadband – Up to 1Gbps
- Telephone and TV points fitted
- Low energy lighting
- Vertical panel internal doors
- Built in wardrobes, where indicated
- Security alarm to the house and garage
- External lighting (front elevation only)
- Turf to front and rear gardens
- Outside tap
- EV charging point (7.4kW)

*Choices may be available for these elements, subject to stage of construction **Maisonettes will have radiators





SITE PLAN

TWO BED MAISONNETTES:
PLOTS 9, 10, 17, 18, 27, 28, 33 & 34

TWO BEDS: PLOTS 7, 8, 15, 16, 31, 32, 43 & 44

THREE BEDS: PLOTS 3, 4, 11, 12, 13, 14, 24, 25, 26, 35, 42, 45, 50, 51 & 52

FOUR BEDS: PLOTS 1, 2, 5, 6, 19, 20, 21, 23, 29, 30, 36, 37, 38, 39, 40, 46, 47, 48 & 49

FIVE BEDS: PLOTS: 22 & 41

Sat nav: Monument Way, Corby, NN17 5GY



PLOT 1

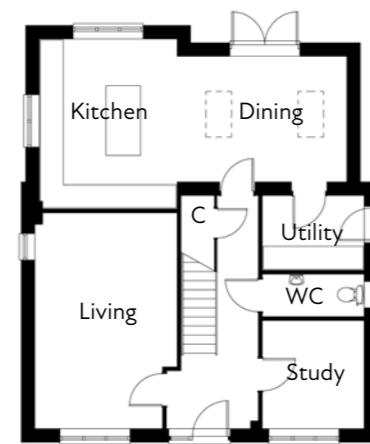
Detached four bedroom home with open plan kitchen/dining, study, en suites to beds 1 & 2 and garage

GROUND FLOOR

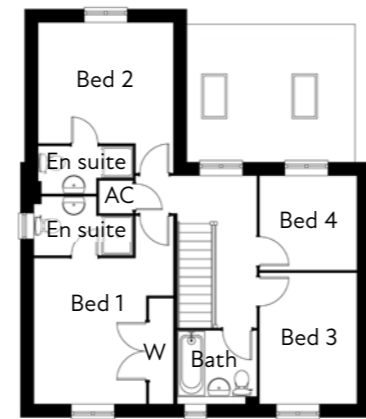
Living room	5.5m x 3.6m
Kitchen	4.4m x 3.6m
Dining	4.3m x 3.2m
Study	2.8m x 2.6m
Utility	2.6m x 1.9m
WC	2.6m x 1.1m

FIRST FLOOR

Bed 1	3.8m x 3.6m (incl. wardrobe)
En suite	2.6m max 1.6m min x 1.5m
Bed 2	3.5m x 3.2m
En suite	2.5m max 1.5m min x 1.2m
Bed 3	3.4m x 2.5m
Bed 4	2.5m x 2.5m
Bathroom	2m x 1.9m



GROUND FLOOR



FIRST FLOOR

PLOT 2

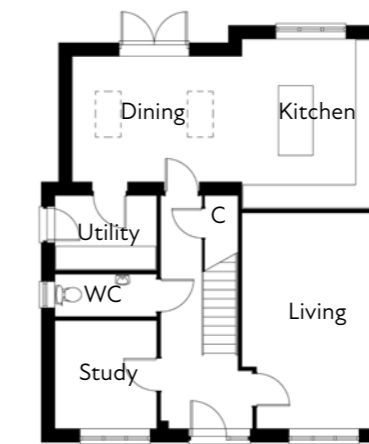
Detached stone built four bedroom home with open plan kitchen/dining, study, en suites to beds 1 & 2 and garage

GROUND FLOOR

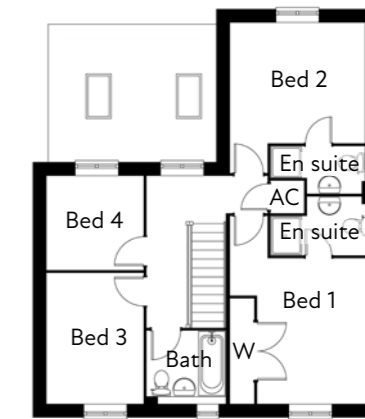
Living room	5.5m x 3.6m
Kitchen	4.4m x 3.6m
Dining	4.3m x 3.2m
Study	2.8m x 2.6m
Utility	2.6m x 1.9m
WC	2.6m x 1.1m

FIRST FLOOR

Bed 1	3.8m x 3.6m (incl. wardrobe)
En suite	2.6m max 1.6m min x 1.5m
Bed 2	3.5m x 3.2m
En suite	2.5m max 1.5m min x 1.2m
Bed 3	3.4m x 2.5m
Bed 4	2.5m x 2.5m
Bathroom	2m x 1.9m



GROUND FLOOR



FIRST FLOOR

PLOTS 3 & 4

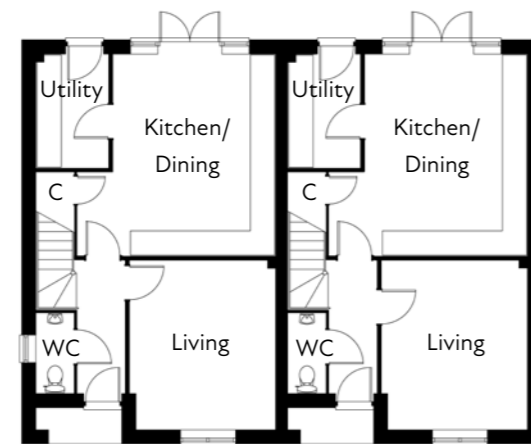
Semi detached three bedroom homes with open plan kitchen/dining, en suite to bed 1 and garage

GROUND FLOOR

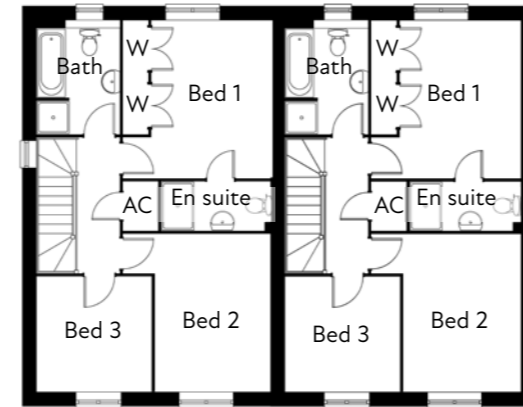
Living room	4.2m x 3.6m
Kitchen/Dining	5m x 4.9m max
Utility	2.8m x 1.8m
WC	2m x 0.9m

FIRST FLOOR

Bed 1	3.9m x 3m (incl. wardrobe)
En suite	2.8m x 1.2m
Bed 2	3.9m x 2.9m
Bed 3	2.9m x 2.9m
Bathroom	2.8m x 2.1m



GROUND FLOOR



FIRST FLOOR

PLOT 5

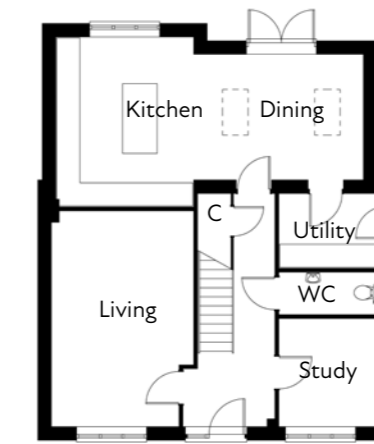
Detached stone built four bedroom home with open plan kitchen/dining, study, en suites to beds 1 & 2 and garage

GROUND FLOOR

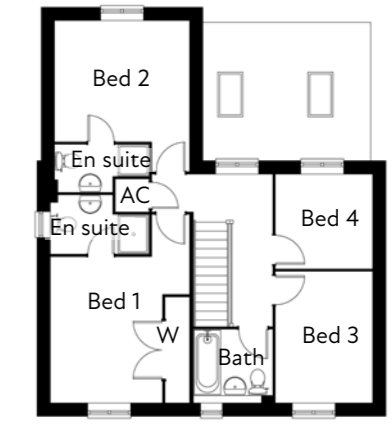
Living room	5.5m x 3.6m
Kitchen	4.4m x 3.6m
Dining	4.3m x 3.2m
Study	2.8m x 2.6m
Utility	2.6m x 1.9m
WC	2.6m x 1.1m

FIRST FLOOR

Bed 1	3.8m x 3.6m (incl. wardrobe)
En suite	2.6m max 1.6m min x 1.5m
Bed 2	3.5m x 3.2m
En suite	2.5m max 1.5m min x 1.2m
Bed 3	3.4m x 2.5m
Bed 4	2.5m x 2.5m
Bathroom	2m x 1.9m



GROUND FLOOR



FIRST FLOOR

PLOT 6

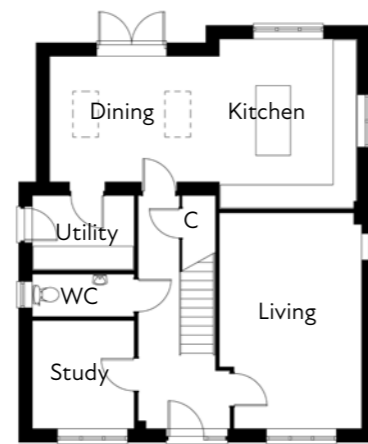
Detached four bedroom home with open plan kitchen/dining, study, en suites to beds 1 & 2 and garage

GROUND FLOOR

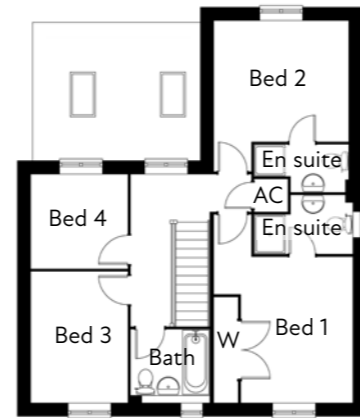
Living room	5.5m x 3.6m
Kitchen	4.4m x 3.6m
Dining	4.3m x 3.2m
Study	2.8m x 2.6m
Utility	2.6m x 1.9m
WC	2.6m x 1.1m

FIRST FLOOR

Bed 1	3.8m x 3.6m (incl. wardrobe)
En suite	2.6m max 1.6m min x 1.5m
Bed 2	3.5m x 3.2m
En suite	2.5m max 1.5m min x 1.2m
Bed 3	3.4m x 2.5m
Bed 4	2.5m x 2.5m
Bathroom	2m x 1.9m



GROUND FLOOR



FIRST FLOOR

PLOTS 7 & 8

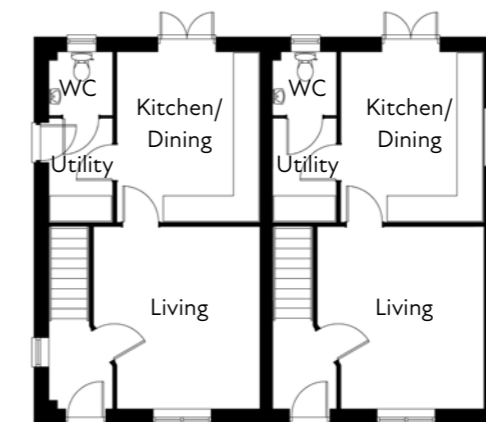
Semi detached two bedroom homes, two bathrooms, wardrobes and parking

GROUND FLOOR

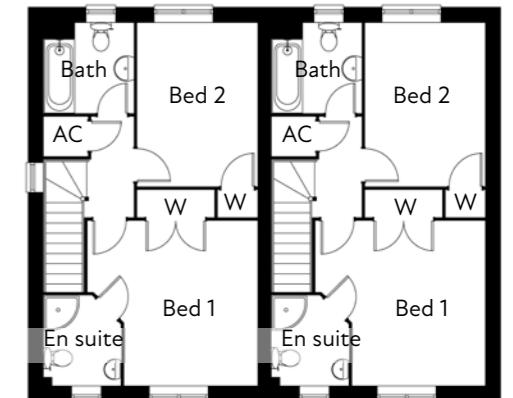
Living room	4.2m max x 3.9m max
Kitchen/Dining	4m x 3.3m
Utility	2.4m x 1.5m
WC	1.5m x 1.5m

FIRST FLOOR

Bed 1	3.9m max x 3.8m max (excl. wardrobe)
En suite	2m x 1.8m
Bed 2	3.8m x 2.8m (excl. wardrobe)
Bathroom	2.1m x 2.1m



GROUND FLOOR



FIRST FLOOR

PLOT 9

Two bedroom ground floor maisonette with two bathrooms, garden and parking

GROUND FLOOR

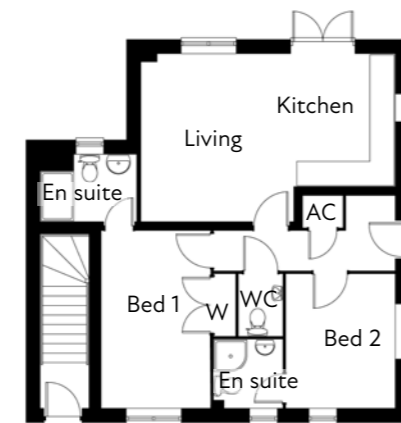
Living room	4.1m x 3.7m
Kitchen	3.2m x 2.5m
WC	1.5m x 1.1m
Bed 1	4.3m x 2.7m (excl. wardrobe)
En suite	2.3m x 1.6m
Bed 2	3.3m x 2.7m
En suite	1.7m x 1.7m

PLOT 10

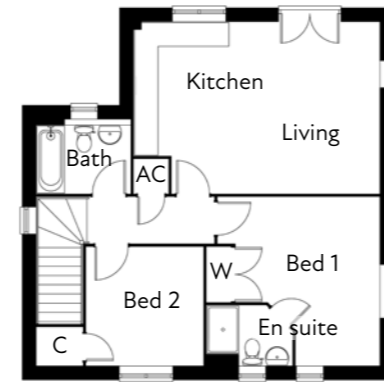
Two bedroom first floor maisonette with two bathrooms, garden and parking

FIRST FLOOR

Kitchen/Living	6.2m x 4.3m
Bed 1	4.3m x 4.1m max
En suite	2.2m x 1.5m
Bed 2	3m x 3m
Bathroom	2.4m x 1.9m



PLOT 9 GROUND FLOOR



PLOT 10 FIRST FLOOR

PLOTS 11 & 12

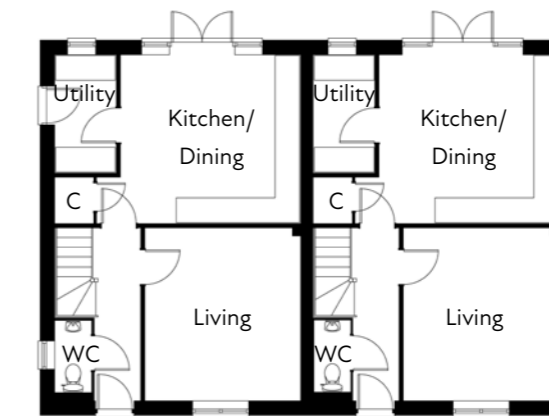
Semi detached three bedroom homes, two bathrooms, utility and parking

GROUND FLOOR

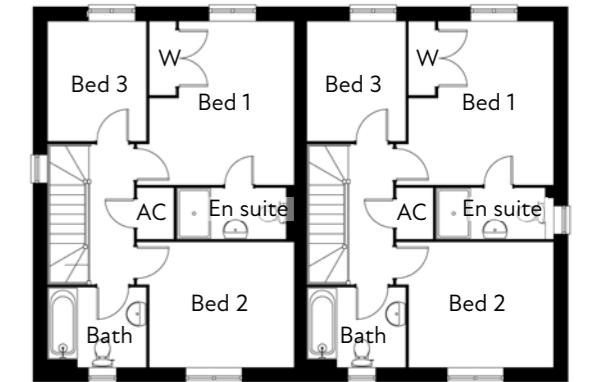
Living room	4.2m x 3.7m
Kitchen/Dining	4.1m x 4.3m
Utility	2.8m x 1.5m
WC	1.7m x 0.9m

FIRST FLOOR

Bed 1	4m x 3.8m max (incl. wardrobe)
En suite	2.6m x 1.2m
Bed 2	3.5m x 3m
Bed 3	2.9m x 2.4m
Bathroom	2.4m x 1.9m



GROUND FLOOR



FIRST FLOOR

PLOTS 13 & 14

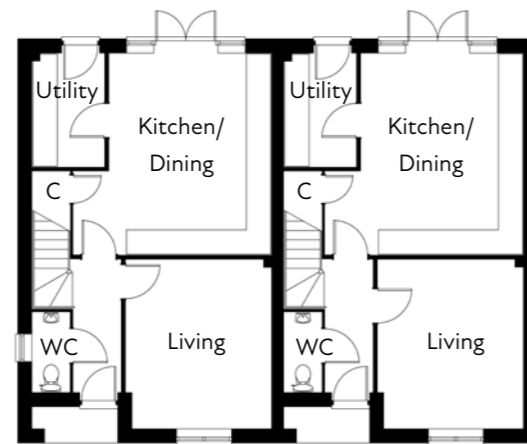
Semi detached three bedroom homes with open plan kitchen/dining, en suite to bed 1 and parking

GROUND FLOOR

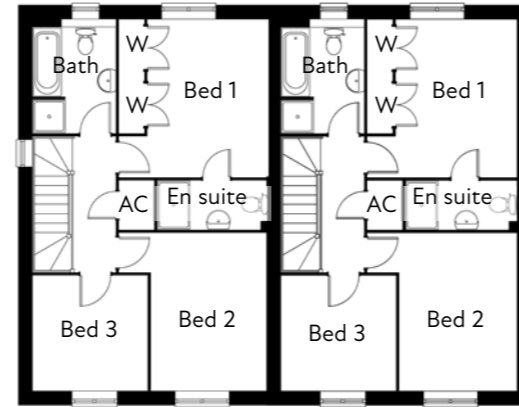
Living room	4.2m x 3.6m
Kitchen/Dining	5m x 4.9m max
Utility	2.8m x 1.8m
WC	2m x 0.9m

FIRST FLOOR

Bed 1	3.9m x 3m (incl. wardrobe)
En suite	2.8m x 1.2m
Bed 2	3.9m x 2.9m
Bed 3	2.9m x 2.9m
Bathroom	2.8m x 2.1m



GROUND FLOOR



FIRST FLOOR

PLOTS 15 & 16

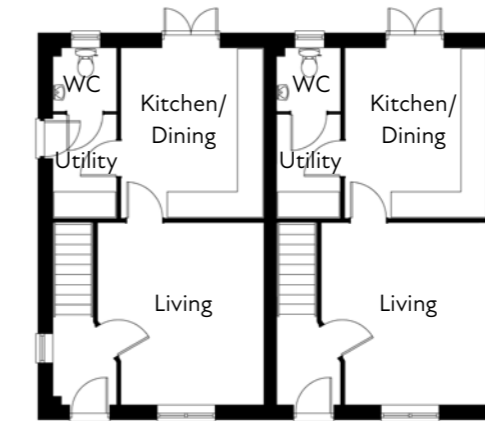
Semi detached two bedroom homes, two bathrooms, wardrobes and parking

GROUND FLOOR

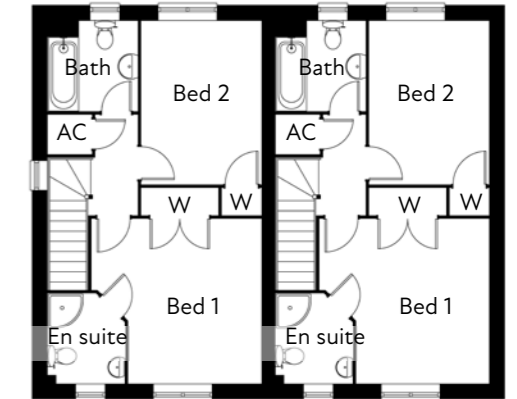
Living room	3.9m max x 3.8m max
Kitchen/Dining	4m x 3.3m
Utility	2.4m x 1.5m
WC	1.5m x 1.5m

FIRST FLOOR

Bed 1	3.8m max x 3.9m max (excl. wardrobe)
En suite	2m x 1.8m
Bed 2	3.8m x 2.8m (excl. wardrobe)
Bathroom	2.1m x 2.1m



GROUND FLOOR



FIRST FLOOR

PLOT 17

Two bedroom ground floor maisonette with two bathrooms, garden and parking

GROUND FLOOR

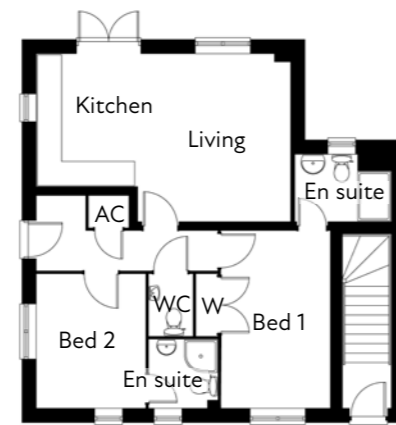
Living room	4.1m x 3.7m
Kitchen	3.2m x 2.5m
WC	1.5m x 1.1m
Bed 1	4.3m x 2.7m (excl. wardrobe)
En suite	2.3m x 1.6m
Bed 2	3.3m x 2.7m
En suite	1.7m x 1.7m

PLOT 18

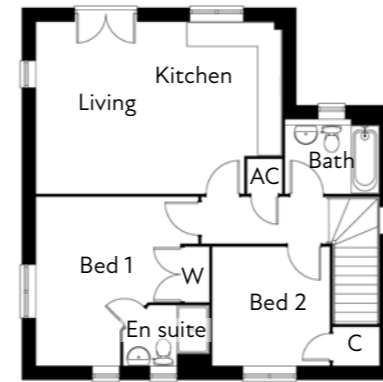
Two bedroom first floor maisonette with two bathrooms, garden and parking

FIRST FLOOR

Kitchen/Living	6.2m x 4.3m
Bed 1	4.3m x 4.1m max
En suite	2.2m x 1.5m
Bed 2	3m x 3m
Bathroom	2.4m x 1.9m



PLOT 17 GROUND FLOOR



PLOT 18 FIRST FLOOR

PLOT 19

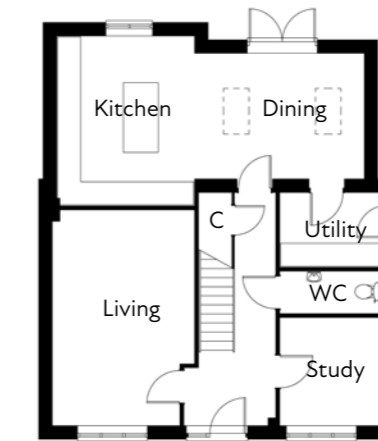
Detached four bedroom home with open plan kitchen/dining, study, en suites to beds 1 & 2 and garage

GROUND FLOOR

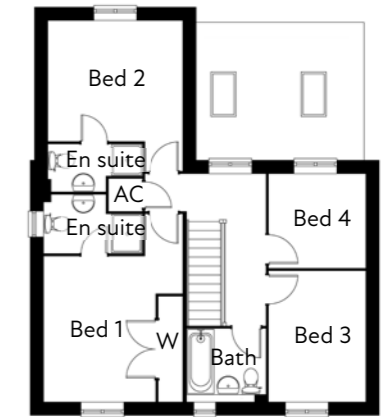
Living room	5.5m x 3.6m
Kitchen	4.4m x 3.6m
Dining	4.3m x 3.2m
Study	2.8m x 2.6m
Utility	2.6m x 1.9m
WC	2.6m x 1.1m

FIRST FLOOR

Bed 1	3.8m x 3.6m (incl. wardrobe)
En suite	2.6m max 1.6m min x 1.5m
Bed 2	3.5m x 3.2m
En suite	2.5m max 1.5m min x 1.2m
Bed 3	3.4m x 2.5m
Bed 4	2.5m x 2.5m
Bathroom	2m x 1.9m



GROUND FLOOR



FIRST FLOOR

PLOT 20

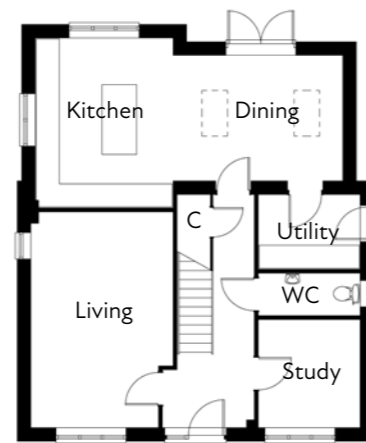
Detached four bedroom home with open plan kitchen/dining, study, en suites to beds 1 & 2 and double garage

GROUND FLOOR

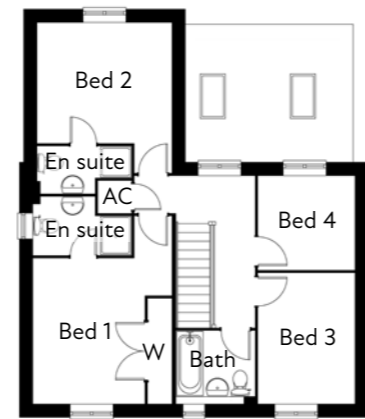
Living room	5.5m x 3.6m
Kitchen	4.4m x 3.6m
Dining	4.3m x 3.2m
Study	2.8m x 2.6m
Utility	2.6m x 1.9m
WC	2.6m x 1.1m

FIRST FLOOR

Bed 1	3.8m x 3.6m (incl. wardrobe)
En suite	2.6m max 1.6m min x 1.5m
Bed 2	3.5m x 3.2m
En suite	2.5m max 1.5m min x 1.2m
Bed 3	3.4m x 2.5m
Bed 4	2.5m x 2.5m
Bathroom	2m x 1.9m



GROUND FLOOR



FIRST FLOOR

PLOT 21

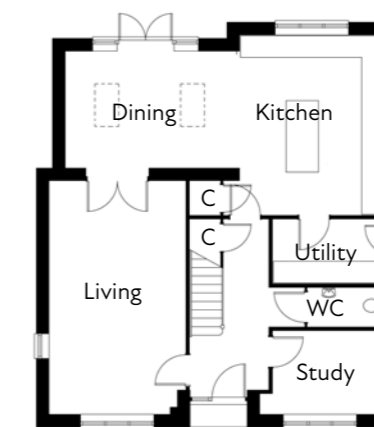
Detached stone built four bedroom home, open plan kitchen/dining, study, en suites to beds 1 & 2 and double garage with large driveway

GROUND FLOOR

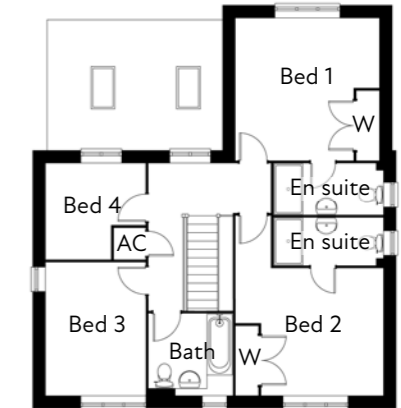
Living room	6.4m x 3.8m
Kitchen	5m x 4m
Dining	4.8m x 3.2m
Study	3.2m x 2.3m
Utility	3.2m x 1.8m
WC	2.2m x 1.1m

FIRST FLOOR

Bed 1	4m x 3.9m (incl. wardrobe)
En suite	3m x 1.4m
Bed 2	4.1m x 3.5m (incl. wardrobe)
En suite	3m x 1.3m
Bed 3	3.7m x 2.8m
Bed 4	2.8m x 2.7m max 1.7m min
Bathroom	2.3m x 2.3m



GROUND FLOOR



FIRST FLOOR

PLOT 22

Detached stone built five bedroom home arranged over three floors, generous open plan kitchen/dining, study, en suites to beds 1 & 2, home office and double garage with large driveway

GROUND FLOOR

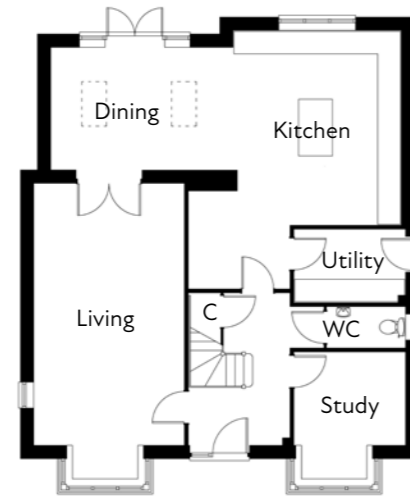
Living room	6.9m x 4m (excl. bay)
Kitchen	5m x 4.4m
Kitchen corner	2.6m x 2.7m
Dining	4.8m x 3.2m
Study	2.9m x 2.4m (excl. bay)
Utility	2.9m x 2.4m
WC	2.1m x 1.1m

FIRST FLOOR

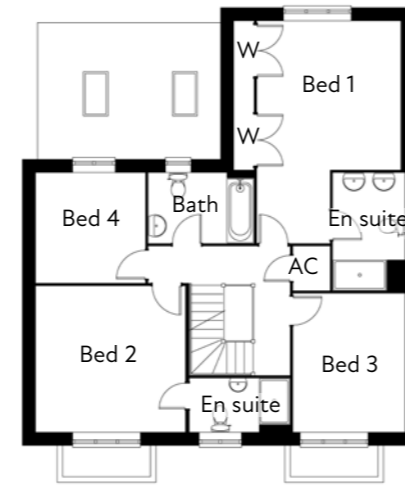
Bed 1	5.9m max 3.9m min x 3.8m max 1.9m min (incl. wardrobe)
En suite	3.1m x 1.9m max 1.4m min
Bed 2	4m x 3.9m
En suite	2.7m x 1.4m
Bed 3	3.7m x 3m
Bed 4	2.9m x 2.9m
Bathroom	2.8m x 1.9m

SECOND FLOOR

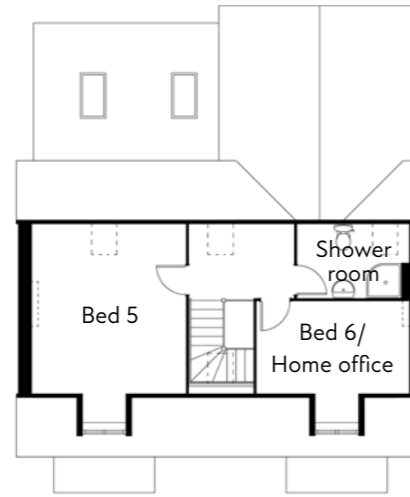
Bed 5	4.4m x 4m (excl. dormer)
Bed 6/Home office	4m x 2.4m (excl. dormer)
Shower room	2.9m x 1.9m



GROUND FLOOR



FIRST FLOOR



SECOND FLOOR



PLOT 23

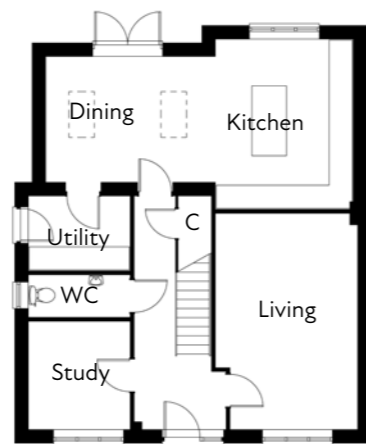
Detached four bedroom home with open plan kitchen/dining, study, en suites to beds 1 & 2 and garage

GROUND FLOOR

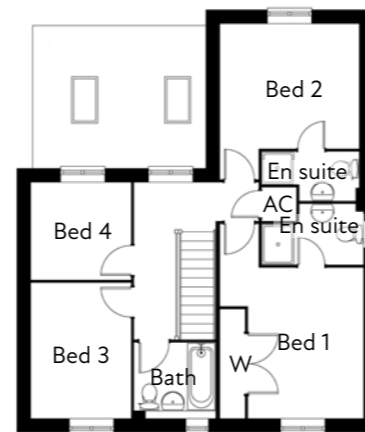
Living room	5.5m x 3.6m
Kitchen	4.4m x 3.6m
Dining	4.3m x 3.2m
Study	2.8m x 2.6m
Utility	2.6m x 1.9m
WC	2.6m x 1.1m

FIRST FLOOR

Bed 1	3.8m x 3.6m (incl. wardrobe)
En suite	2.6m max 1.6m min x 1.5m
Bed 2	3.5m x 3.2m
En suite	2.5m max 1.5m min x 1.2m
Bed 3	3.4m x 2.5m
Bed 4	2.5m x 2.5m
Bathroom	2m x 1.9m



GROUND FLOOR



FIRST FLOOR

PLOT 24

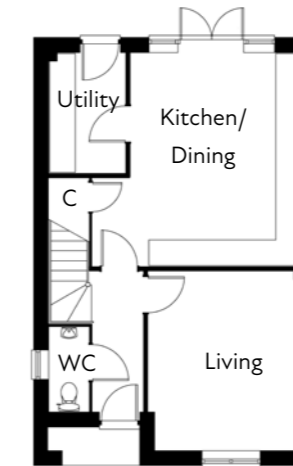
Detached three bedroom home, en suite and wardrobes to bed 1 and garage

GROUND FLOOR

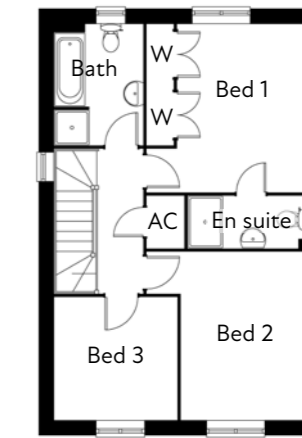
Living room	4.2m x 3.6m
Kitchen/Dining	5m x 4.9m max
Utility	2.8m x 1.8m
WC	2m x 0.9m

FIRST FLOOR

Bed 1	3.9m x 3m (incl. wardrobe)
En suite	2.8m x 1.2m
Bed 2	3.9m x 2.9m
Bed 3	2.9m x 2.9m
Bathroom	2.8m x 2.1m



GROUND FLOOR



FIRST FLOOR

PLOT 25

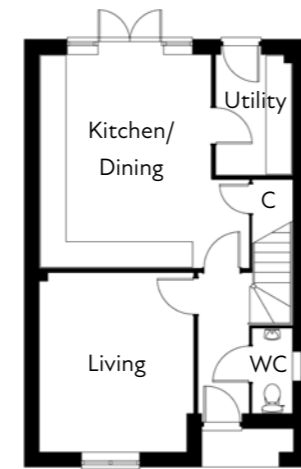
Detached three bedroom home, en suite and wardrobes to bed 1 and garage

GROUND FLOOR

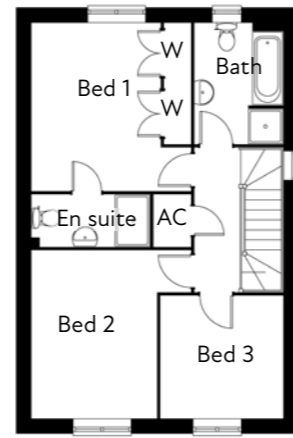
Living room	4.2m x 3.6m
Kitchen/Dining	5m x 4.9m max
Utility	2.8m x 1.8m
WC	2m x 0.9m

FIRST FLOOR

Bed 1	3.9m x 3m (incl. wardrobe)
En suite	2.8m x 1.2m
Bed 2	3.9m x 2.9m
Bed 3	2.9m x 2.9m
Bathroom	2.8m x 2.1m



GROUND FLOOR



FIRST FLOOR

PLOT 26

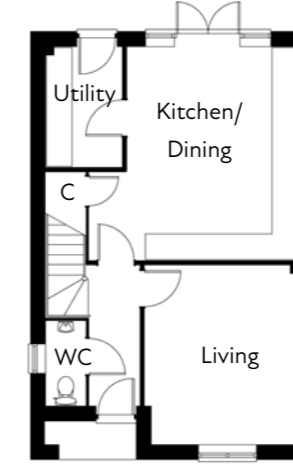
Detached three bedroom home, en suite and wardrobes to bed 1 and garage

GROUND FLOOR

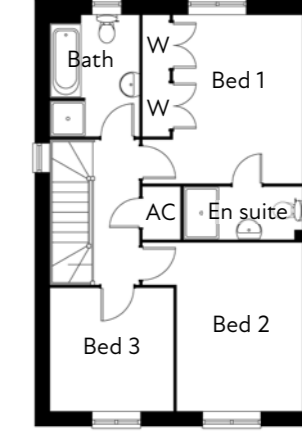
Living room	4.2m x 3.6m
Kitchen/Dining	5m x 4.9m max
Utility	2.8m x 1.8m
WC	2m x 0.9m

FIRST FLOOR

Bed 1	3.9m x 3m (incl. wardrobe)
En suite	2.8m x 1.2m
Bed 2	3.9m x 2.9m
Bed 3	2.9m x 2.9m
Bathroom	2.8m x 2.1m



GROUND FLOOR



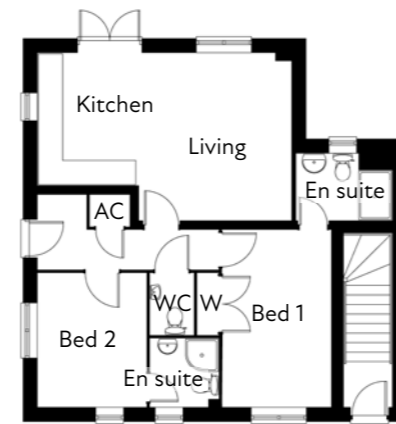
FIRST FLOOR

PLOT 27

Two bedroom ground floor maisonette with two bathrooms, garden and parking

GROUND FLOOR

Living room	4.1m x 3.7m
Kitchen	3.2m x 2.5m
WC	1.5m x 1.1m
Bed 1	4.3m x 2.7m (excl. wardrobe)
En suite	2.3m x 1.6m
Bed 2	3.3m x 2.7m
En suite	1.7m x 1.7m



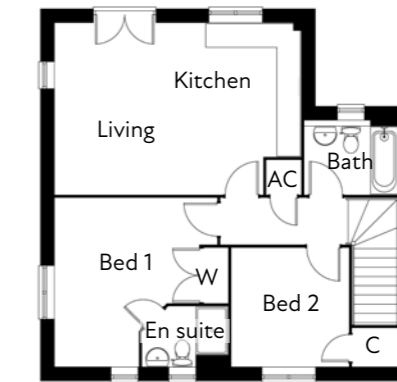
PLOT 27 GROUND FLOOR

PLOT 28

Two bedroom first floor maisonette with two bathrooms, garden and parking

FIRST FLOOR

Kitchen/Living	6.2m x 4.3m
Bed 1	4.3m x 4.1m max
En suite	2.2m x 1.5m
Bed 2	3m x 3m
Bathroom	2.4m x 1.9m



PLOT 28 FIRST FLOOR

PLOTS 29 & 30

Semi detached four bedroom homes arranged over three floors, beds 1 & 2 with en suite shower rooms and parking

GROUND FLOOR

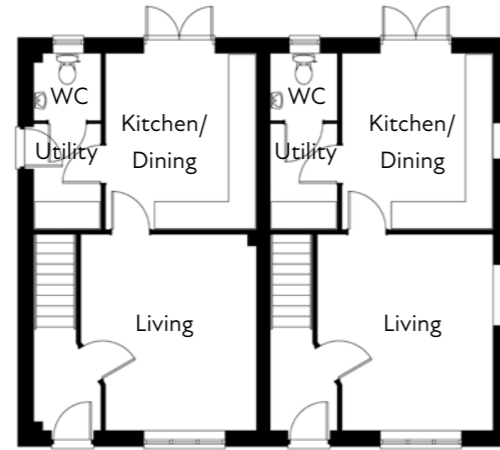
Living room	4.3m x 3.9m max 3.3m min
Kitchen/Dining	3.9m x 3.3m
Utility	2.3m x 1.5m
WC	1.5m x 1.5m

FIRST FLOOR

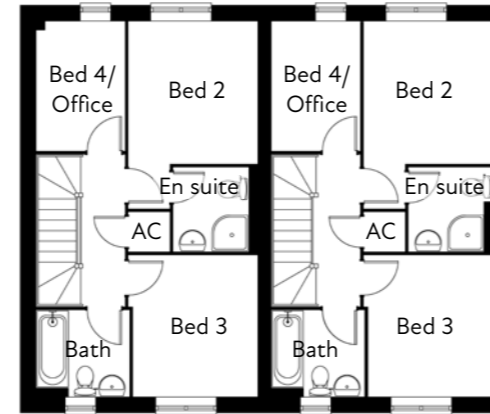
Bed 2	3.2m min x 2.9m max
En suite	1.9m x 1.7m
Bed 3	3.1m x 2.8m
Bed 4/home office	2.9m x 2m
Bathroom	2m x 1.9m

SECOND FLOOR

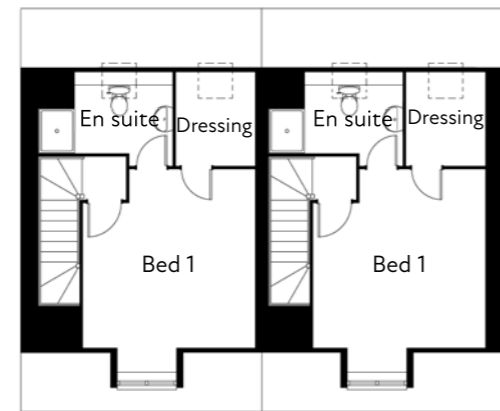
Bed 1	4m x 3.9m
En suite	3m max 2.2m min x 1.5m
Dressing area	2.1m x 1.8m



GROUND FLOOR



FIRST FLOOR



SECOND FLOOR



PLOTS 31 & 32

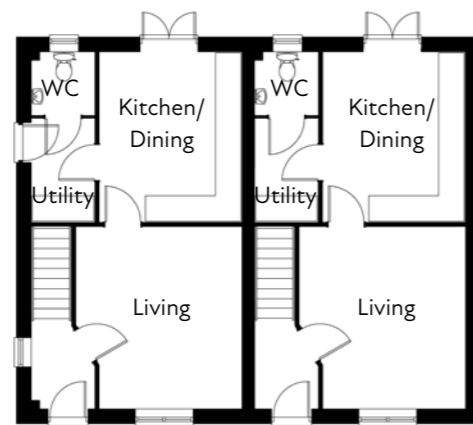
Semi detached two bedroom homes, two bathrooms, wardrobes and parking

GROUND FLOOR

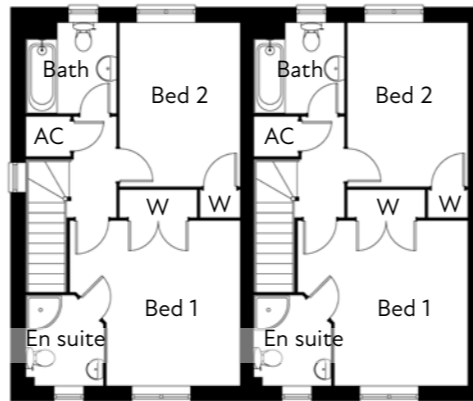
Living room	3.9m max x 3.8m max
Kitchen/Dining	4m x 3.3m
Utility	2.4m x 1.5m
WC	1.5m x 1.5m

FIRST FLOOR

Bed 1	3.9m max x 3.8m max (excl. wardrobe)
En suite	2m x 1.8m
Bed 2	3.8m x 2.8m (excl. wardrobe)
Bathroom	2.1m x 2.1m



GROUND FLOOR



FIRST FLOOR

PLOT 33

Two bedroom ground floor maisonette with two bathrooms, garden and parking

GROUND FLOOR

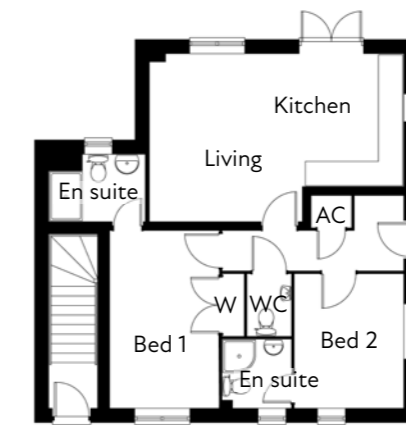
Living room	4.1m x 3.7m
Kitchen	3.2m x 2.5m
WC	1.5m x 1.1m
Bed 1	4.3m x 2.7m (excl. wardrobe)
En suite	2.3m x 1.6m
Bed 2	3.3m x 2.7m
En suite	1.7m x 1.7m

PLOT 34

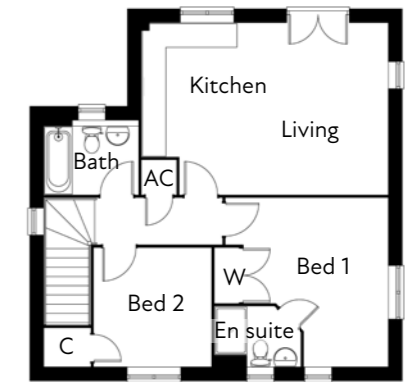
Two bedroom first floor maisonette with two bathrooms, garden and parking

FIRST FLOOR

Kitchen/Living	6.2m x 4.3m
Bed 1	4.3m x 4.1m max
En suite	2.2m x 1.5m
Bed 2	3m x 3m
Bathroom	2.4m x 1.9m



PLOT 33 GROUND FLOOR



PLOT 34 FIRST FLOOR

PLOT 35

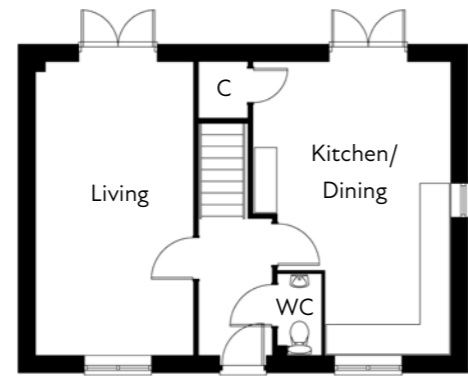
Detached three bedroom home, en suite and wardrobe to bed 1 and parking

GROUND FLOOR

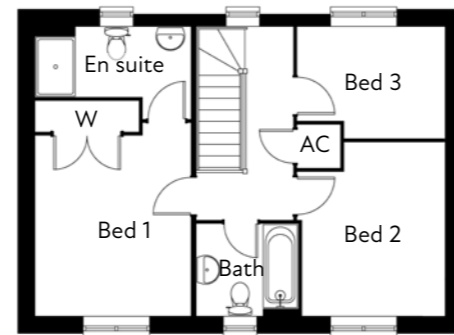
Living room	5.9m x 3.2m
Kitchen/Dining	5.9m x 4m max 2.5m min
WC	1.6m x 0.9m

FIRST FLOOR

Bed 1	3.7m x 3.2m (incl. wardrobe)
En suite	3.2m x 1.4m
Bed 2	3.5m x 2.9m
Bed 3	3m x 2.3m
Bathroom	2m x 1.9m



GROUND FLOOR



FIRST FLOOR

PLOT 36

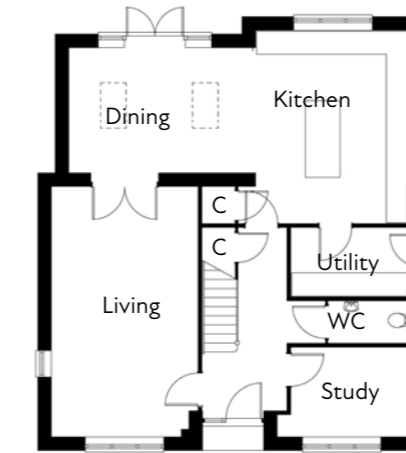
Detached four bedroom home, open plan kitchen/dining, study, en suites to beds 1 & 2 and double garage

GROUND FLOOR

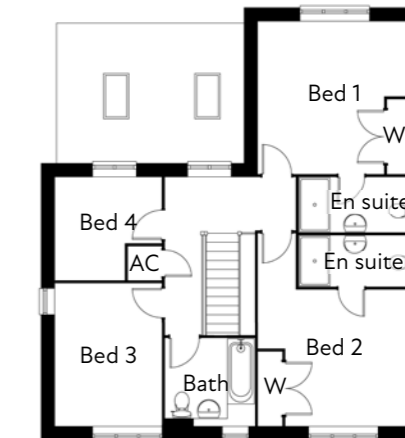
Living room	6.4m x 3.8m
Kitchen	5m x 4m
Dining	4.8m x 3.2m
Study	3.2m x 2.3m
Utility	3.2m x 1.8m
WC	2.2m x 1.1m

FIRST FLOOR

Bed 1	4m x 3.9m (incl. wardrobe)
En suite	3m x 1.4m
Bed 2	4.1m x 3.5m
En suite	3m x 1.3m
Bed 3	3.7m x 2.8m
Bed 4	2.8m x 2.7m max 1.7m min
Bathroom	2.3m x 2.3m



GROUND FLOOR



FIRST FLOOR

PLOTS 37 & 38

PLOT REVISIONS SUBJECT
TO PLANNING

PLOTS 39 & 40

PLOT REVISIONS SUBJECT
TO PLANNING

PLOT 41

Detached stone built five bedroom home arranged over three floors, generous open plan kitchen/dining, study, en suites to beds 1 & 2, home office and double garage with large driveway

GROUND FLOOR

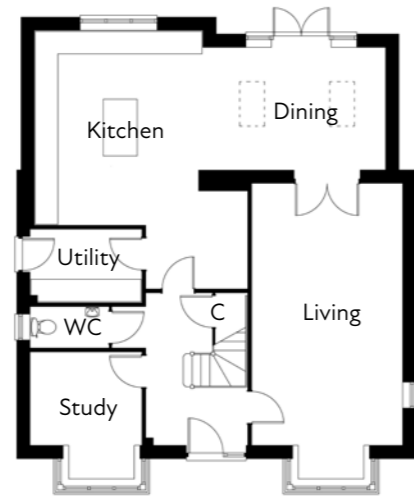
Living room	6.9m x 4m (excl. bay)
Kitchen	5m x 4.4m
Kitchen corner	2.6m x 2.7m
Dining	4.8m x 3.2m
Study	2.9m x 2.4m (excl. bay)
Utility	2.9m x 2.4m
WC	2.1m x 1.1m

FIRST FLOOR

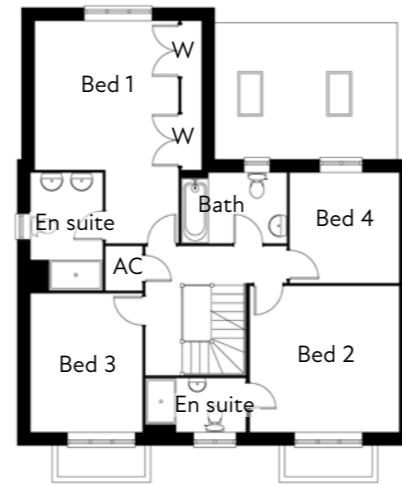
Bed 1	5.9m max 3.9m min x 3.8m max 1.9m min (incl. wardrobe)
En suite	3.1m x 1.9m max 1.4m min
Bed 2	4m x 3.9m
En suite	2.7m x 1.4m
Bed 3	3.7m x 3m
Bed 4	2.9m x 2.9m
Bathroom	2.8m x 1.9m

SECOND FLOOR

Bed 5	4.4m x 4m (excl. dormer)
Bed 6/Home office	4m x 2.4m (excl. dormer)
Shower room	2.9m x 1.9m



GROUND FLOOR



FIRST FLOOR



SECOND FLOOR



PLOT 42

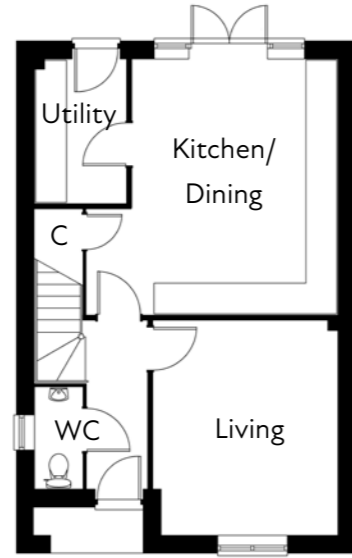
Detached three bedroom home with en suite and wardrobe in bed 1 and garage

GROUND FLOOR

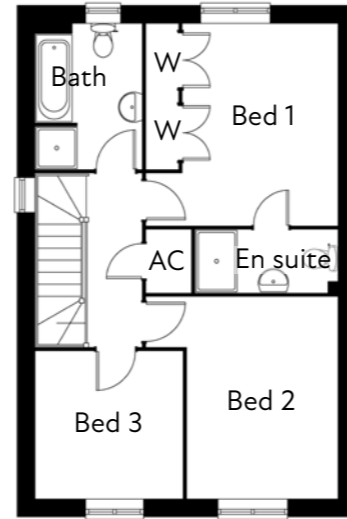
Living room	4.2m x 3.6m
Kitchen/Dining	5m x 4.9m max
Utility	2.8m x 1.8m
WC	2m x 0.9m

FIRST FLOOR

Bed 1	3.9m x 3m (incl. wardrobe)
En suite	2.8m x 1.2m
Bed 2	3.9m x 2.9m
Bed 3	2.9m x 2.9m
Bathroom	2.8m x 2.1m



GROUND FLOOR



FIRST FLOOR



PLOTS 43 & 44

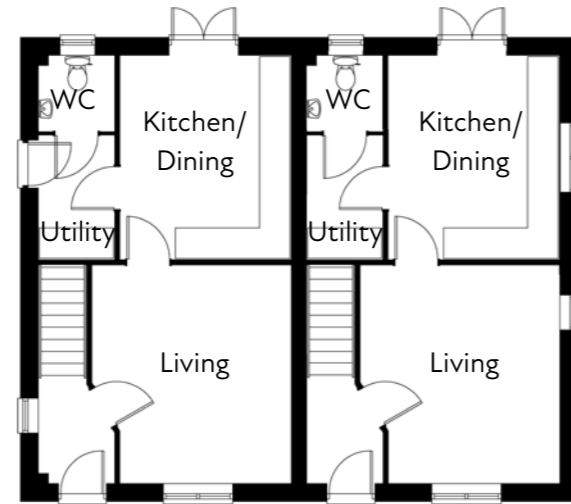
Semi detached two bedroom homes, two bathrooms, wardrobes and parking

GROUND FLOOR

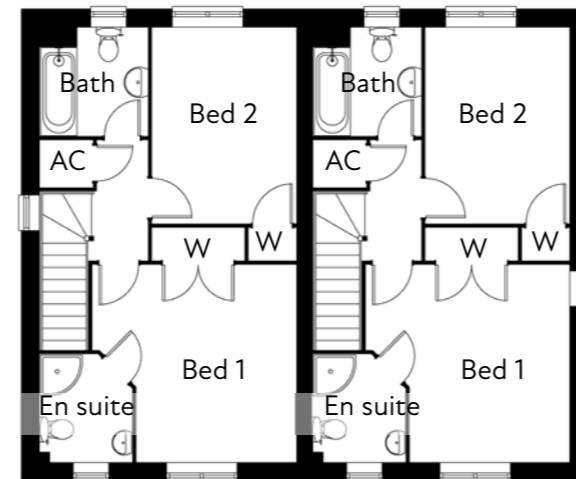
Living room	4.2m max x 3.9m max
Kitchen/Dining	4m x 3.3m
Utility	2.4m x 1.5m
WC	1.5m x 1.5m

FIRST FLOOR

Bed 1	3.9m max x 3.8m max (excl. wardrobe)
En suite	2m x 1.8m
Bed 2	3.8m x 2.8m (excl. wardrobe)
Bathroom	2.1m x 2.1m



GROUND FLOOR



FIRST FLOOR



PLOT 45

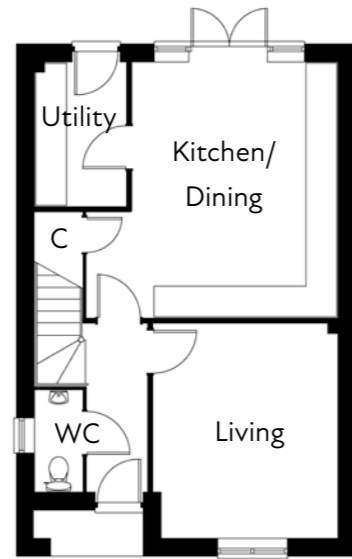
Detached three bedroom home with en suite and wardrobe in bed 1 and parking

GROUND FLOOR

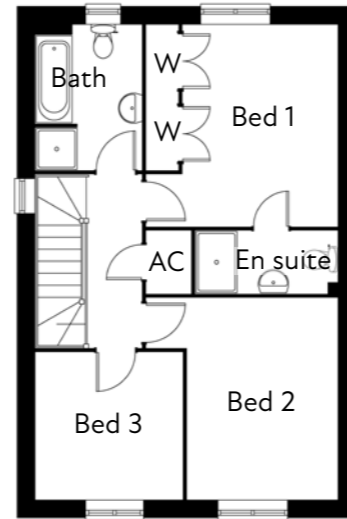
Living room	4.2m x 3.6m
Kitchen/Dining	5m x 4.9m max
Utility	2.8m x 1.8m
WC	2m x 0.9m

FIRST FLOOR

Bed 1	3.9m x 3m (incl. wardrobe)
En suite	2.8m x 1.2m
Bed 2	3.9m x 2.9m
Bed 3	2.9m x 2.9m
Bathroom	2.8m x 2.1m



GROUND FLOOR



FIRST FLOOR



PLOTS 46 & 47

Semi detached four bedroom homes arranged over three floors, beds 1 & 2 with en suite shower rooms and parking

GROUND FLOOR

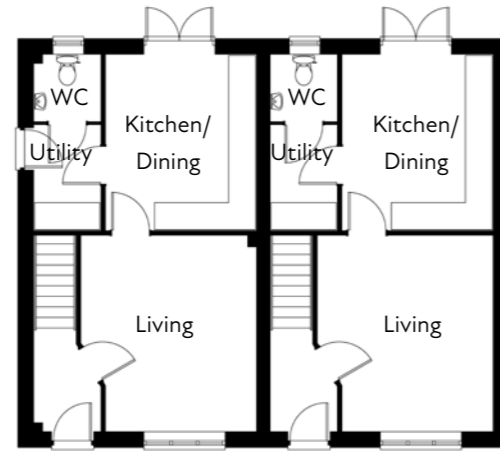
Living room	4.3m x 3.9m max 3.3m min
Kitchen/Dining	3.9m x 3.3m
Utility	2.3m x 1.5m
WC	1.5m x 1.5m

FIRST FLOOR

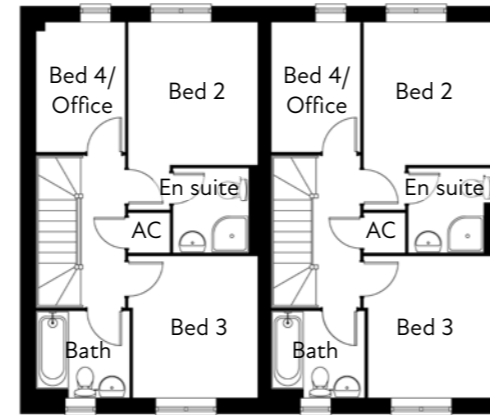
Bed 2	3.2m min x 2.9m max
En suite	1.9m x 1.7m
Bed 3	3.1m x 2.8m
Bed 4/home office	2.9m x 2m
Bathroom	2m x 1.9m

SECOND FLOOR

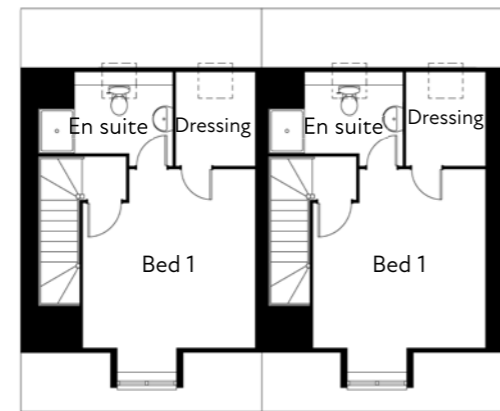
Bed 1	4m x 3.9m
En suite	3m max 2.2m min x 1.5m
Dressing area	2.1m x 1.8m



GROUND FLOOR



FIRST FLOOR



SECOND FLOOR



PLOTS 48 & 49

Semi detached four bedroom homes arranged over three floors, beds 1 & 2 with en suite shower rooms and generous parking

GROUND FLOOR

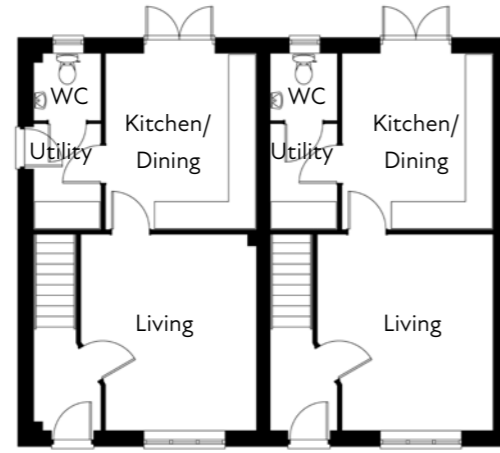
Living room	4.3m x 3.9m max 3.3m min
Kitchen/Dining	3.9m x 3.3m
Utility	2.3m x 1.5m
WC	1.5m x 1.5m

FIRST FLOOR

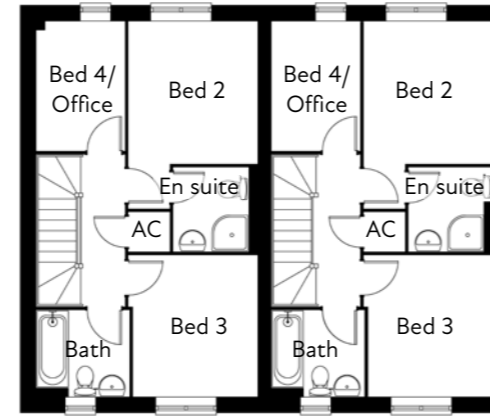
Bed 2	3.2m min x 2.9m max
En suite	1.9m x 1.7m
Bed 3	3.1m x 2.8m
Bed 4/home office	2.9m x 2m
Bathroom	2m x 1.9m

SECOND FLOOR

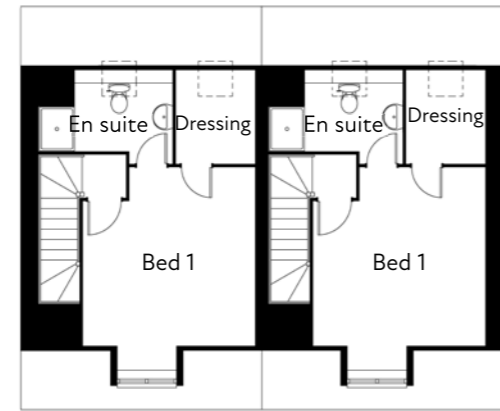
Bed 1	4m x 3.9m
En suite	3m max 2.2m min x 1.5m
Dressing area	2.1m x 1.8m



GROUND FLOOR



FIRST FLOOR



SECOND FLOOR



PLOTS 50 - 52

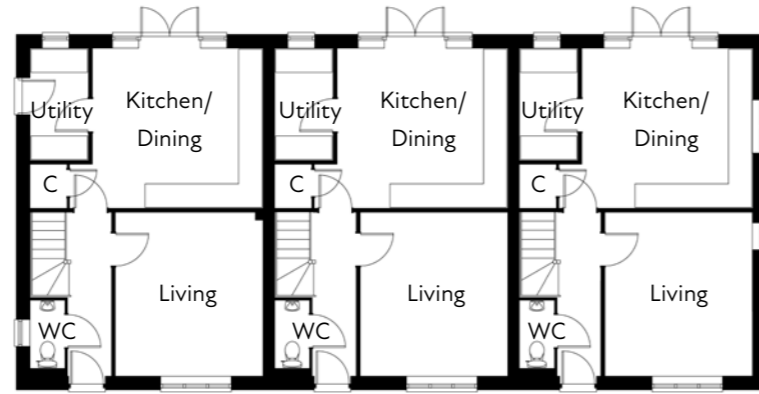
A terrace of three homes, each property has three bedrooms, two bathrooms, utility and parking

GROUND FLOOR

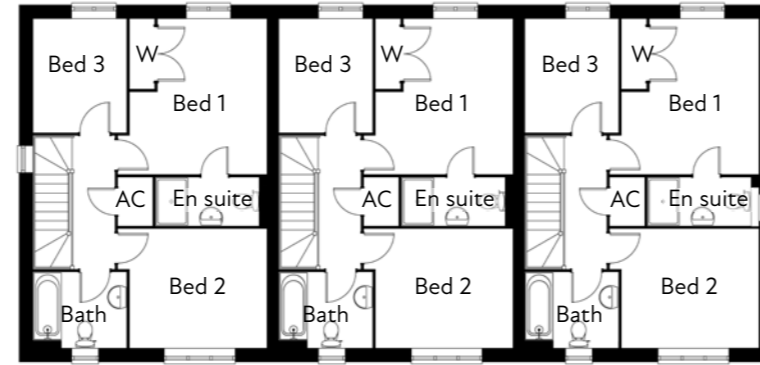
Living room	4.2m x 3.7m
Kitchen/Dining	4.1m x 4.3m
Utility	2.8m x 1.5m
WC	1.7m x 0.9m

FIRST FLOOR

Bed 1	4m x 3.8m max (incl. wardrobe)
En suite	2.6m x 1.2m
Bed 2	3.5m x 3m
Bed 3	2.9m x 2.4m
Bathroom	2.4m x 1.9m



GROUND FLOOR



FIRST FLOOR



PRIORS HALL PARK

FEEL CONNECTED



Priors Hall Park is uniquely positioned in the heart of the Northamptonshire countryside, within easy reach of Corby train station (trains to London St Pancras take 70 minutes) and major roads, including A1 and A14. Milton Keynes, Leicester, Peterborough and Northampton are all less than an hour's drive away.

The Park will offer over 25 acres of public space with cycle paths, walking routes and recreational spaces, including an amphitheatre and outdoor fitness areas. As well as their daily use, these areas provide locations for several community events throughout the year which include regular walking groups for all ages, Family Fun Days and Outdoor Theatre. More activities are available all year round at the Priors Hall Community Centre.

Within the Park families can benefit from a full range of childcare and schools to take your children from early years to the end of their secondary education. The Corby Business Academy, opened in 2008, caters for students from Year 7 to Sixth form.

Local amenities include a Sainsbury's Local, dentist, vet, pharmacy as well as the very popular The Good Bean café and other takeaway outlets. At the Corby Enterprise Centre, on the edge of the Park, a range of flexible serviced offices and studio space is available for small businesses.

With another primary school due to open in 2028 and plans for two more local centres as well as a doctor's surgery, sports pitches and more; Priors Hall Park is an exciting place with a vibrant community to call home.





LOCATION



Sat nav: Monument Way, Corby NN17 5GY

Some of the images shown in this brochure are computer generated images (CGI). Details are given as a general guide and may be subject to alteration. The plans shown are not to scale and dimensions should be used for reference only and should not be relied on for ordering carpets or furniture. A Predicted Energy Assessment is available, please ask Francis Jackson Homes for a copy. April 2026.



FRANCIS JACKSON HOMES

6 High Street, Olney, Buckinghamshire MK46 4BB

t 01234 717700 e sales@francisjackson.co.uk francisjacksonhomes.co.uk